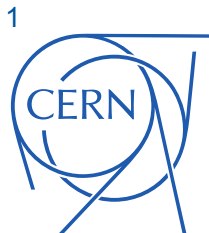


# RF Design of a High-Frequency RFQ Linac for PIXE Analysis

H. W. Pommerenke<sup>1,2</sup>, A. Bilton<sup>1</sup>, A. Grudiev<sup>1</sup>, A. M. Lombardi<sup>1</sup>, S. Mathot<sup>1</sup>,  
E. Montesinos<sup>1</sup>, M. Timmins<sup>1</sup>, M. Vretenar<sup>1</sup>, U. van Rienen<sup>2</sup>



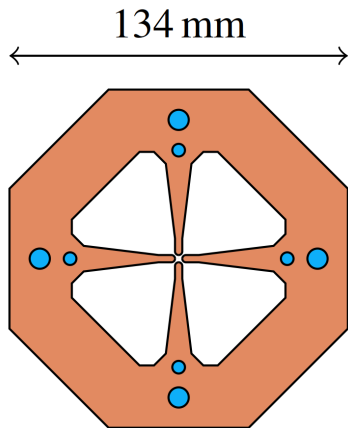
# The PIXE RFQ

**PIXE = particle/proton-induced X-ray emission**

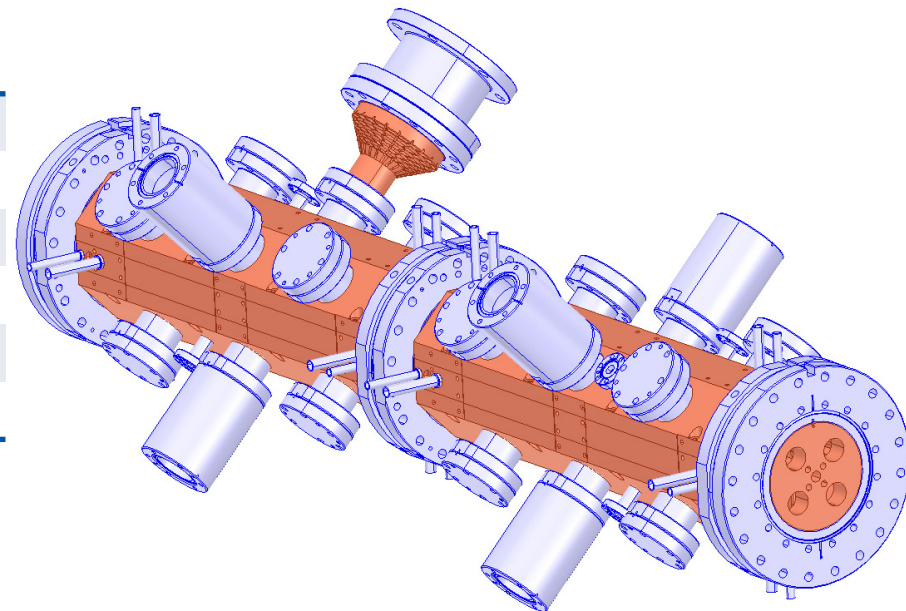
- low energy ion beam excites X-ray in specimen atoms
- spectrum allows for non-destructive analysis of artefacts, cultural heritage (among others)

## PIXE RFQ

- 750 MHz RFQ provides 2 MeV protons over only one meter
- goal: first transportable system for *in situ* ion beam analysis

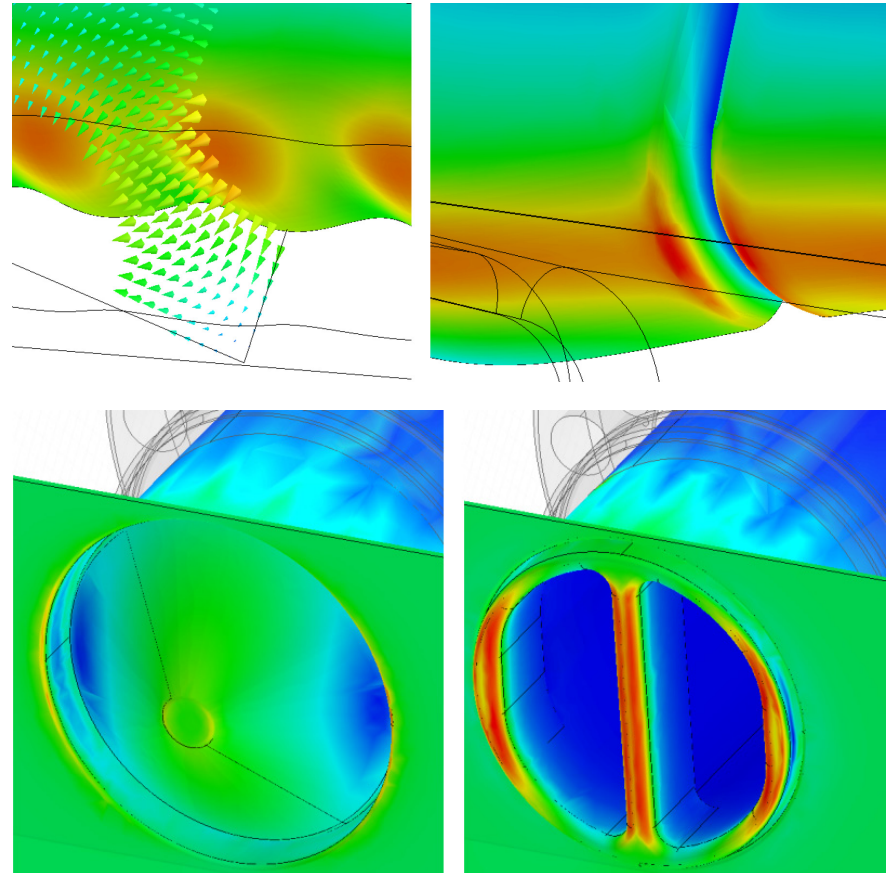


Input energy	20	keV
Output energy	2	MeV
RF frequency	749.48	MHz
RFQ length	1072.938	mm
Vane voltage	35	kV
Min. aperture	0.7	mm



# RF Design

- optimisation for 749.48 MHz and maximum Q factor
- end plates with bead pull holes and dipole stabilisation rods
- maximum surface electric field: 39.1 MV/m at module gap
- 16 copper slug tuners with conical tip
- 7 vacuum ports with crossbar



# RF Design

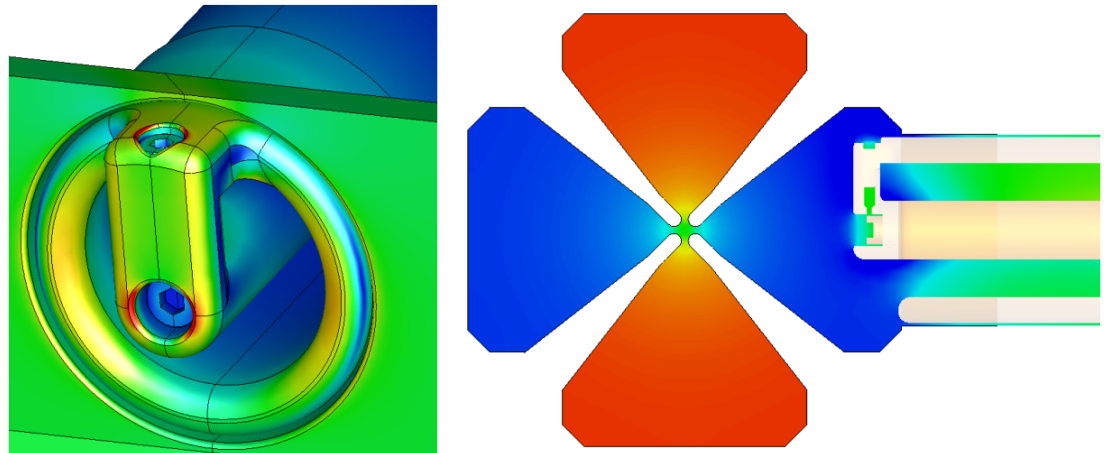
- power loss can be calculated from decomposition into segments

$$P_0 = \frac{\omega_0 V^2}{2} \sum_s \frac{1}{Q_{0,s}} \int_{\text{Seg. } s} C'(z) dz$$

without simulating full model

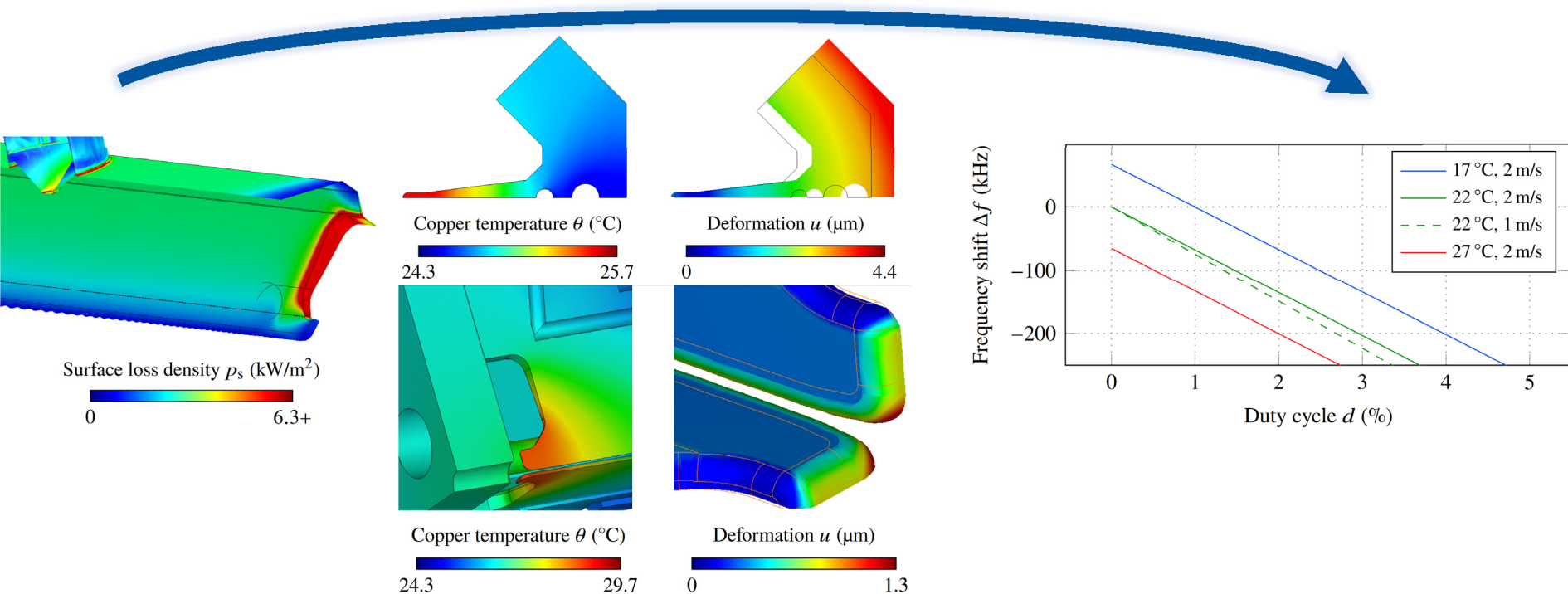
Loss factor	6000
Capacitance	125 pF/m
Stored energy	82 mJ
RF power loss	64.5 kW
Max. surface field	39.1 MV/m

- one input power coupler (coaxial magnetic loop antenna) mounted on rotatable flange



# Thermal Simulation

- RF power loss raises RFQ temperature, thermal expansion results in deformation and frequency shift
- study frequency shift in dependence of duty cycle and water cooling properties



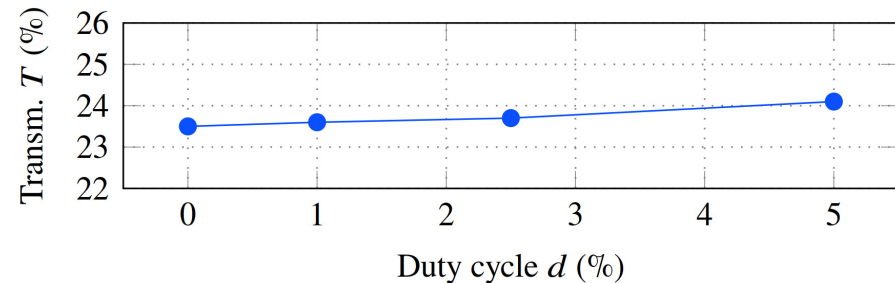
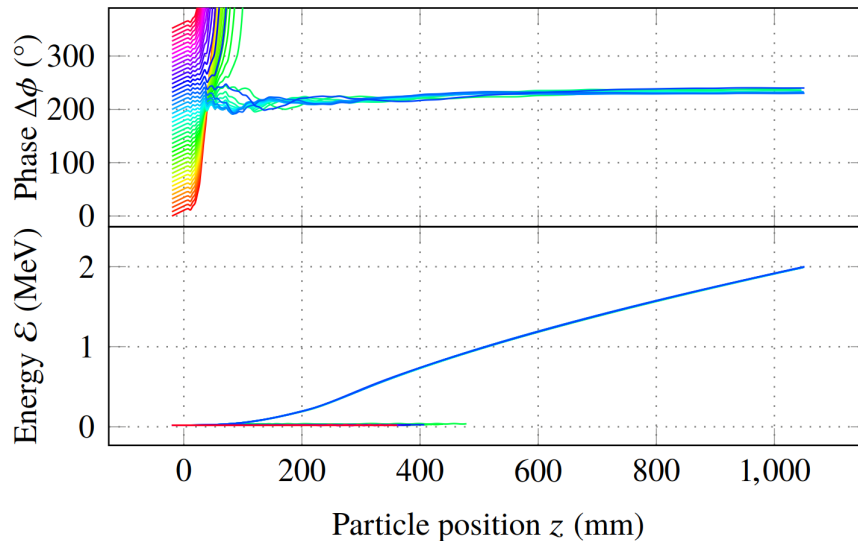
# 1D Particle Tracking

- validate RF design by tracking particles through RF field
- so far: longitudinal tracking only

0.. $2\pi$  start phases

20 keV  $\rightarrow$  2 MeV

$x = y = 0$



- Frequency shift due to RF heating acceptable for transmission

# Conclusion

- RF design done for cavity, tuners, pumping ports, power coupler
- thermal simulation conducted to obtain requirements on cooling circuit
- first tracking results: deformation due to RF heating acceptable
- current state: machining, first brazing expected Oct 2018

# Thank you!



[www.cern.ch](http://www.cern.ch)

**Universität  
Rostock**



Traditio et Innovatio

SPONSORED BY THE



Federal Ministry  
of Education  
and Research

*This work has been sponsored by the Wolfgang Gentner Programme of the German Federal Ministry of Education and Research (grant no. 05E12CHA)*



# References

1. S. A. E. Johansson et al. *Particle-induced X-ray emission spectrometry (PIXE)*. Vol. 133. John Wiley & Sons, 1995.
2. M. Vretenar et al. “High-frequency compact RFQs for medical and industrial applications.” In: *28th Linear Accelerator Conf. (LINAC’16), East Lansing, MI, USA*. 2016. doi: 10.18429/JACoW-LINAC2016-TH1A06.
3. L. Giuntini et al. “MACHINA: movable accelerator for cultural heritage in-situ non-destructive analysis.” In: *16th International Conference on Nuclear Microprobe Technology and Applications (ICNMTA’18), Guilford, Surrey, England*. 2018.
4. A. Lombardi et al. “Beam dynamics in a high frequency RFQ.” In: *6th International Particle Accelerator Conference (IPAC’15), Richmond, VA, USA*. 2015.
5. B. Koubek et al. “Tuning of the CERN 750 MHz RFQ for medical applications.” In: *28th Linear Accelerator Conf. (LINAC’16), East Lansing, MI, USA*. 2016. doi: 10.18429/JACoW-LINAC2016-THOP09.