



ICALEPCS 2015 in... Melbourne, Australia



Where is Australia...?

Some people refer to Australia as the land DOWN UNDER...

Where is Australia...?

ON TOP and in the CENTRE!

The Hobo-Dyer Equal Area Projection

This new map belongs to the family of Cylindrical Equal Area projections in which the latitude and longitude lines form a rectangular grid. Other projections in this family include the Lambert, Gall, Behrmann, Edwards, and Peters projections. In the present case the "cylinder" is assumed to wrap round the globe and cut through it at 37½° north and south. In order to preserve the equal area property the shapes of the landmasses become progressively flattened towards the poles, but shapes between 45° north and south are well preserved.



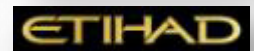
Where is Australia...?

ON TOP and in the CENTRE!



How to get to Melbourne

There are over 30 international and domestic airlines that operate directly to Melbourne Airport



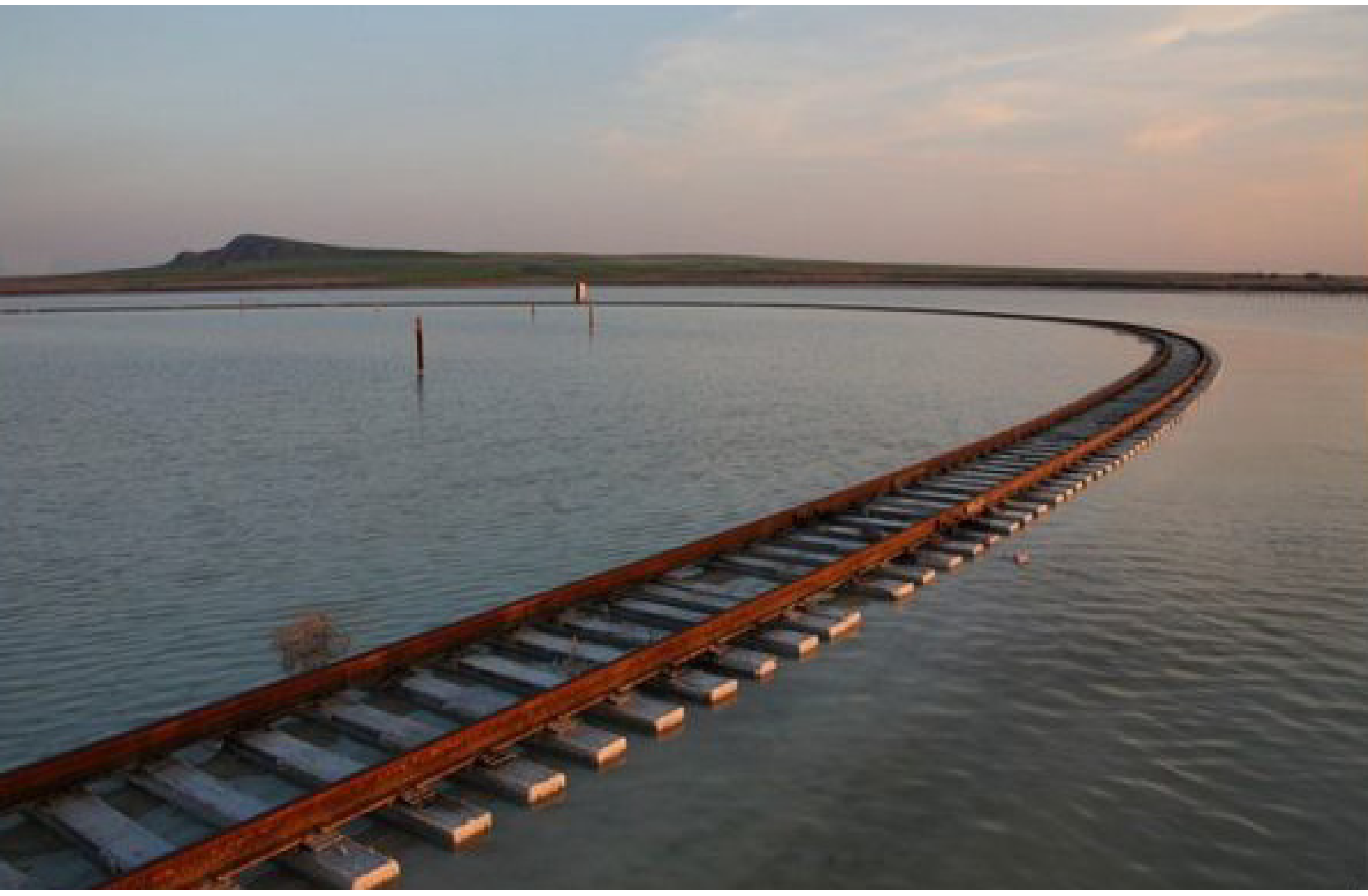
Other options to get to Melbourne.....



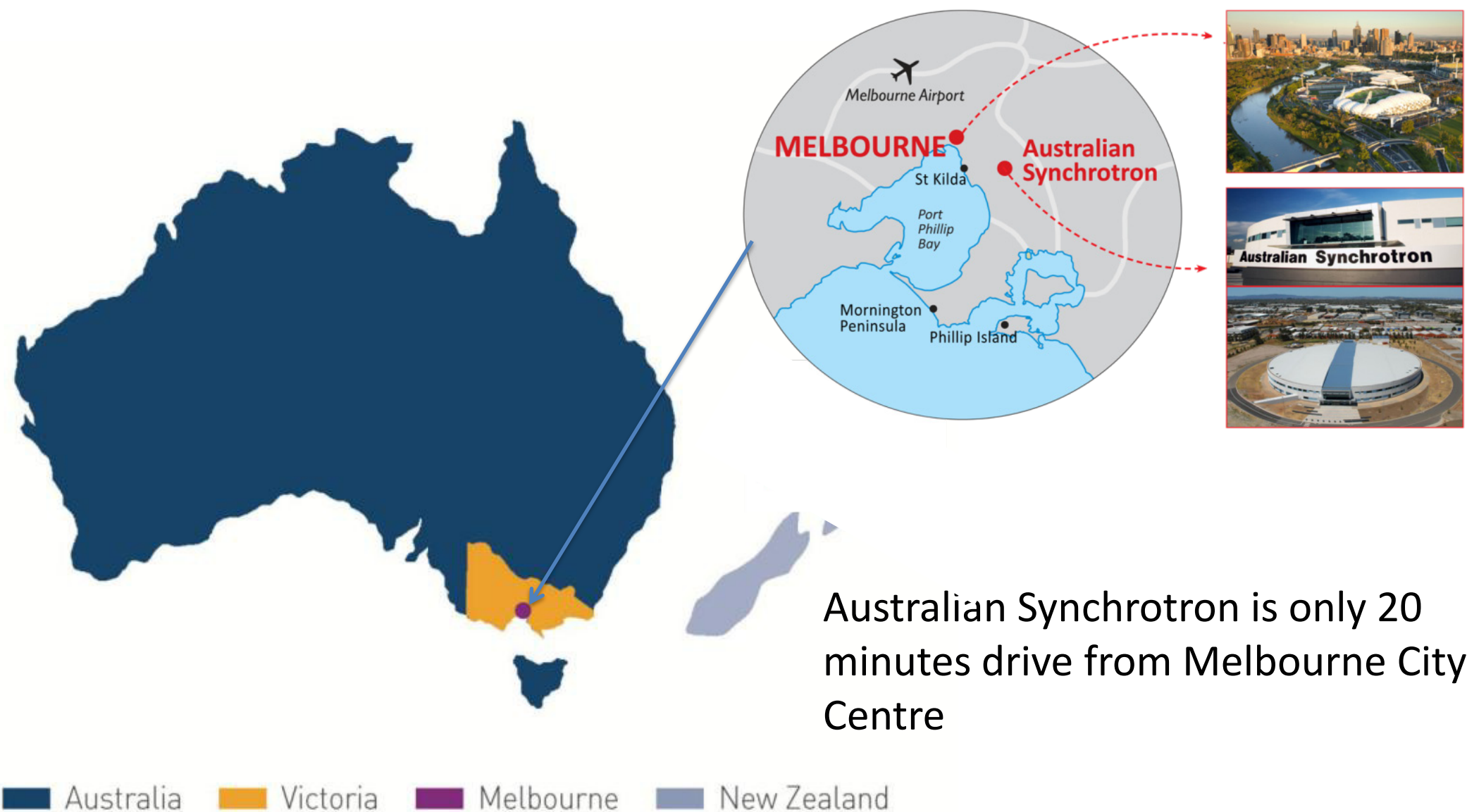
Or.....



Or.....



Host City Melbourne, Australia



Host Institute The Australian Synchrotron (AS)

Located in Melbourne's premier research precinct surrounded by universities and research institutes.

Official opening in 2007 and now has 9 operational beamlines.

Grown to 2500 unique users attracting over 3000 research visits per year.



Host Institute The Australian Synchrotron (AS)



IMBL
Beamline

User
accommodation

National Centre for
Synchrotron
Science

Engineering
Building and labs

Host Institute The Australian Synchrotron (AS)



IMBL
Beamline

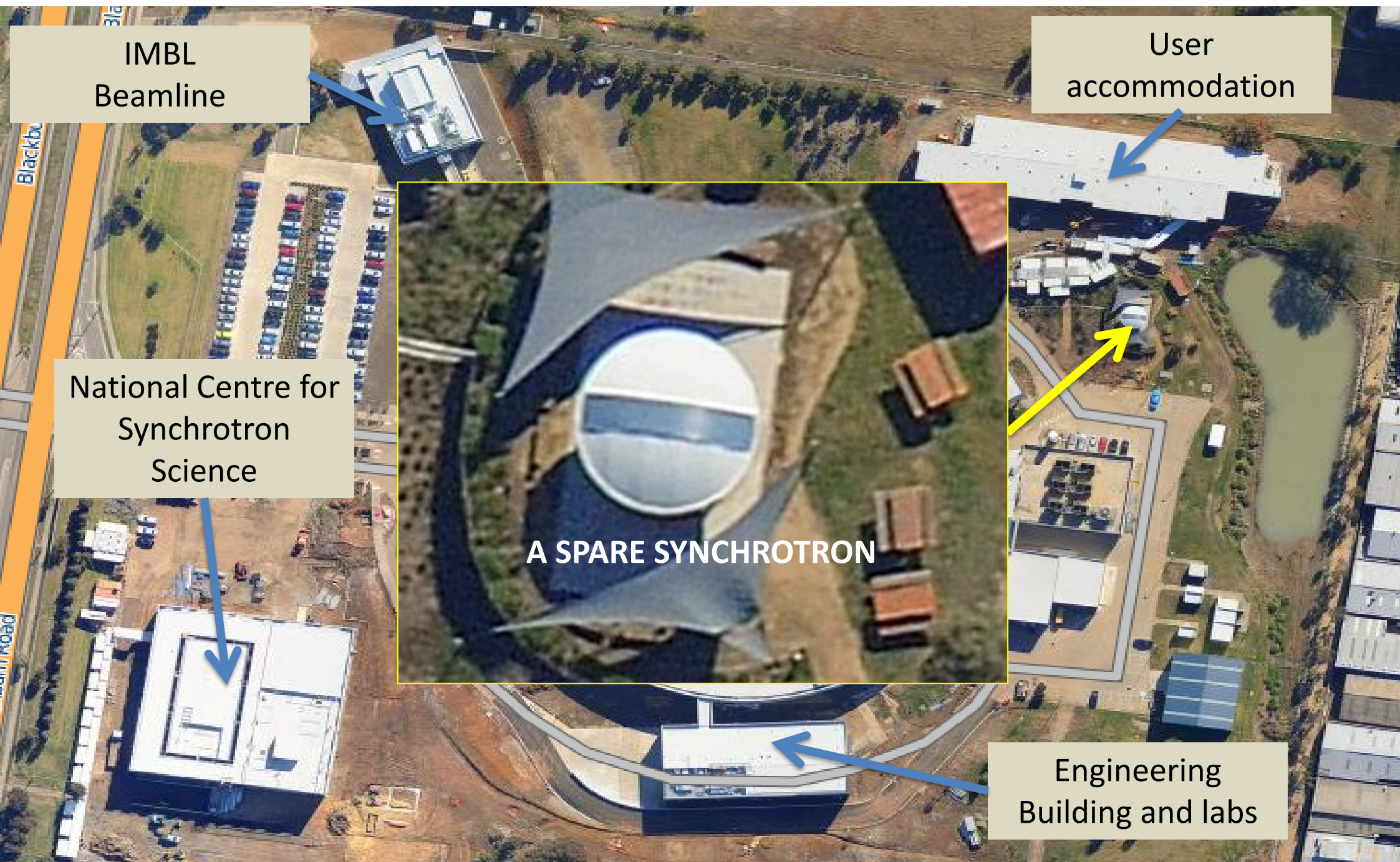
User
accommodation

National Centre for
Synchrotron
Science

**What is the one thing you would love
to have when operating a
Synchrotron?**

Engineering
Building and labs

Host Institute The Australian Synchrotron (AS)



IMBL
Beamline

User
accommodation

National Centre for
Synchrotron
Science

A SPARE SYNCHROTRON

Engineering
Building and labs

Supporting Institutes

ANSTO: The Australian Nuclear Science and Technology Organisation.

- Public research organisation, delivering specialised advice, scientific services and products.
- Major supplier of nuclear medicines to Australian hospitals.

ANU: The Australian National University.

- A research intensive university.
- Department of nuclear physics operates the premier lab in Australia for accelerator based research.



CSIRO: Commonwealth Scientific and Industrial Research Organisation

- Australia's national science agency.
- Largest and most diverse research agency's in the world, over 50 sites across Australia and overseas.
- The Astronomy and Space Science division currently developing next generation telescope - The Australian SKA Pathfinder.



Proposed – Melbourne Convention & Exhibition Centre (MCEC)



Exhibition Centre

Hilton Hotel

Convention Centre

Walking distance to Melbourne's world class restaurants, hotels, shopping and entertainment precinct.

Situated along the Yarra river integrated with the Hilton Hotel.

Proposed Venue – Melbourne Convention & Exhibition Centre

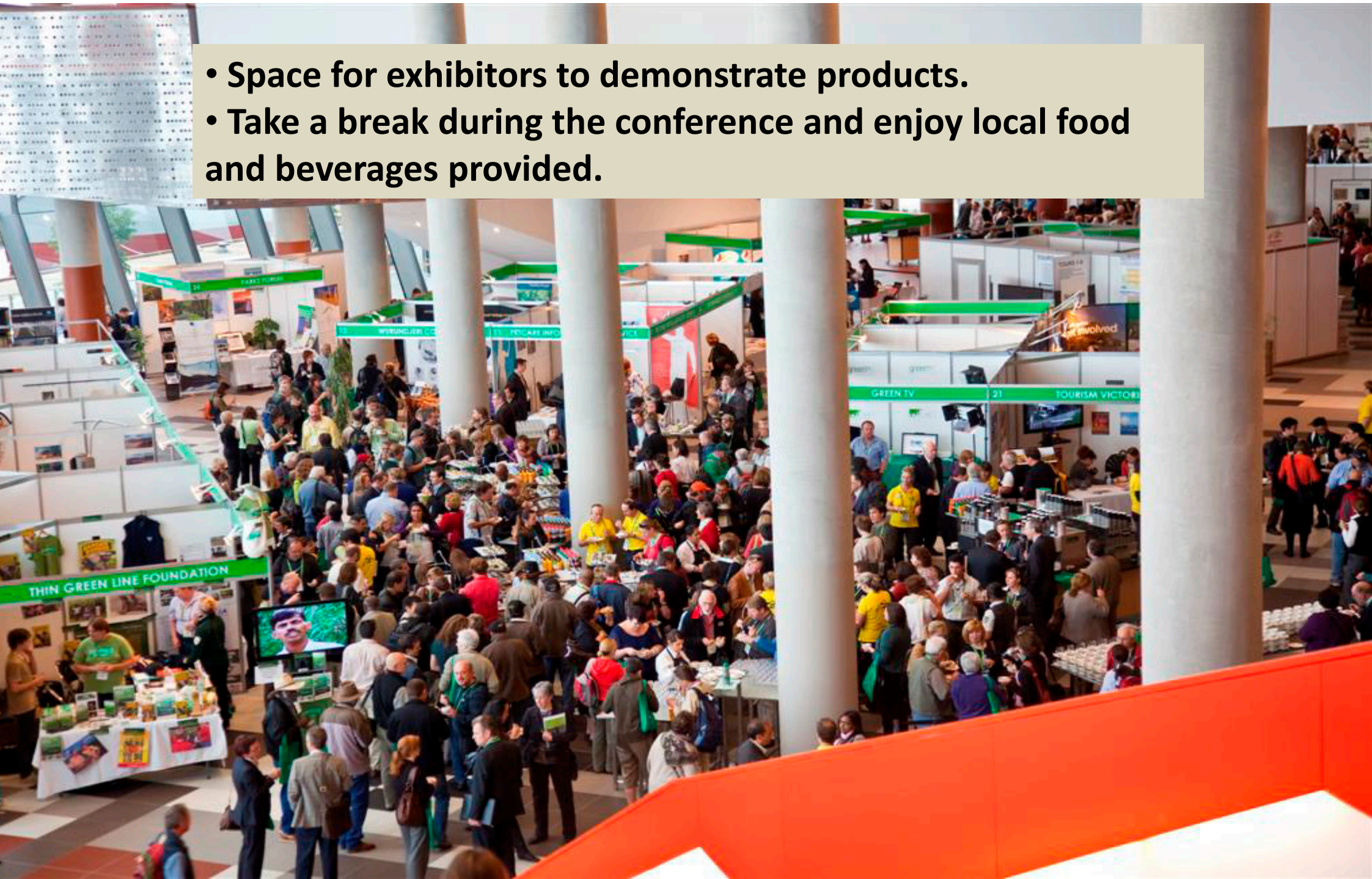
- Generous seating capacity (~1500).
- Meeting rooms for workshops and parallel sessions.
- State of the art audio and visual communication.
- Free wireless internet for all delegates.





Proposed Venue – Melbourne Convention & Exhibition Centre

- Space for exhibitors to demonstrate products.
- Take a break during the conference and enjoy local food and beverages provided.





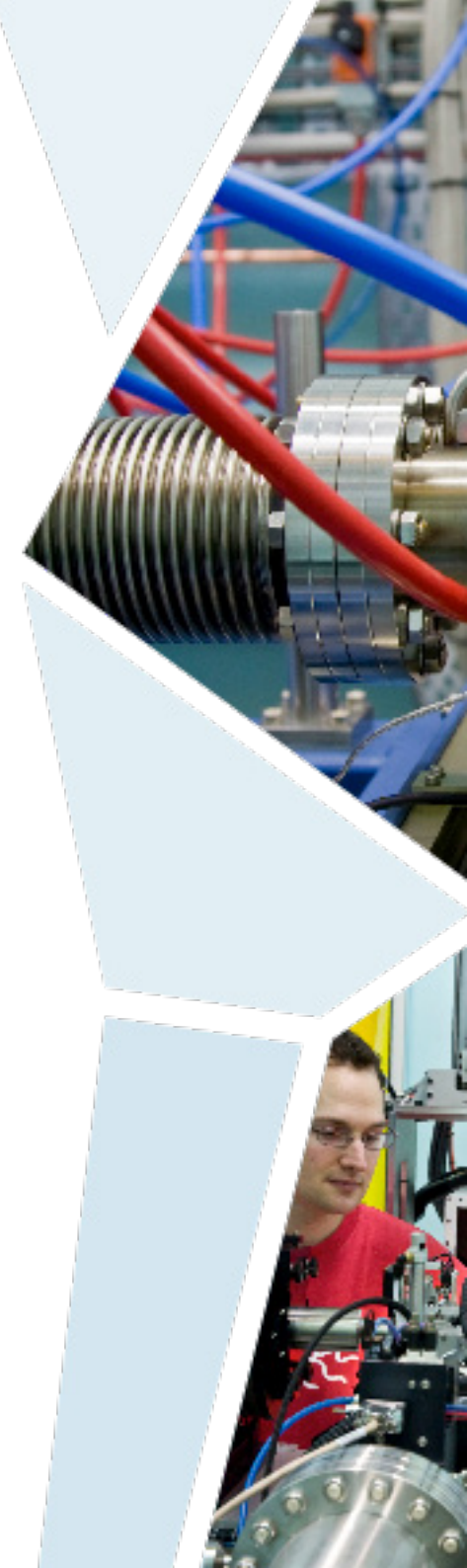
ICALEPCS 2015

Program

Proposed Dates: 17th – 23rd October 2015 (Spring Time)

Conference program to follow format of past ICALEPCS.....
except with an Aussie flavour (will keep as a surprise?)

- Pre ICALEPCS meetings and workshops (i.e; EPICS)
- Welcome Cocktail Reception
- 5 day Technical Program
- Conference Dinner
- Technical Tour of Australian Synchrotron
- Touring activities for delegates and accompanying persons



Accommodation Options



Hotel	No. of Rooms	Distance from MCEC
Hilton Melbourne South Wharf (5*)	396	Adjoined
Crown Towers (5*)	658	500m
Crown Metropol (5*)	482	100m
Crown Promenade (4.5*)	465	400m
Crowne Plaza (4*)	383	200m
Holiday Inn on Flinders (4*)	200	300m



Melbourne

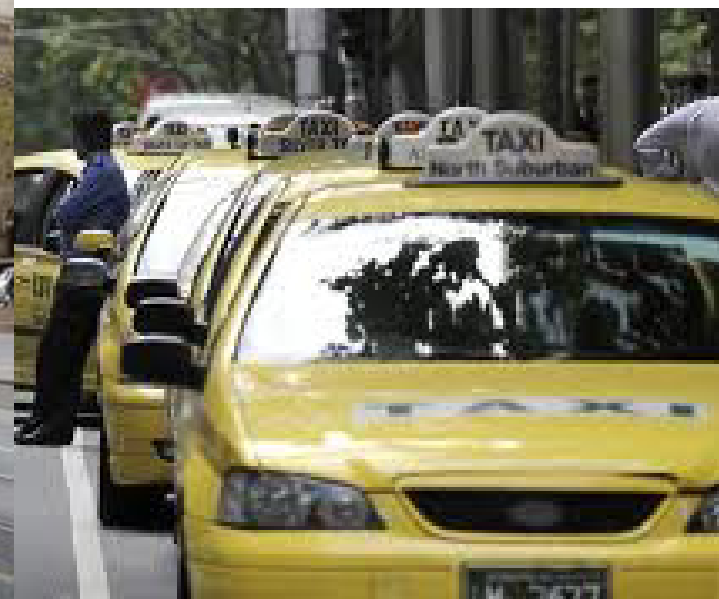
Multicultural, safe and friendly city

- Over 4 million people (+ 2 Million Kangaroos and 1 Million Koalas!).
- 233 ethnic communities, 180 languages
- Accredited as an international 'Safe City' by the World Health Organisation.
- Voted by Australians as Australia's top destination for style, shopping, international sporting and cultural events, theatre, world-class restaurants, interesting cafés, bars and nightclubs (Roy Morgan Research)
- Rated the "World's Most Liveable City" according to the latest Economist Intelligence Unit's Global Liveability Survey



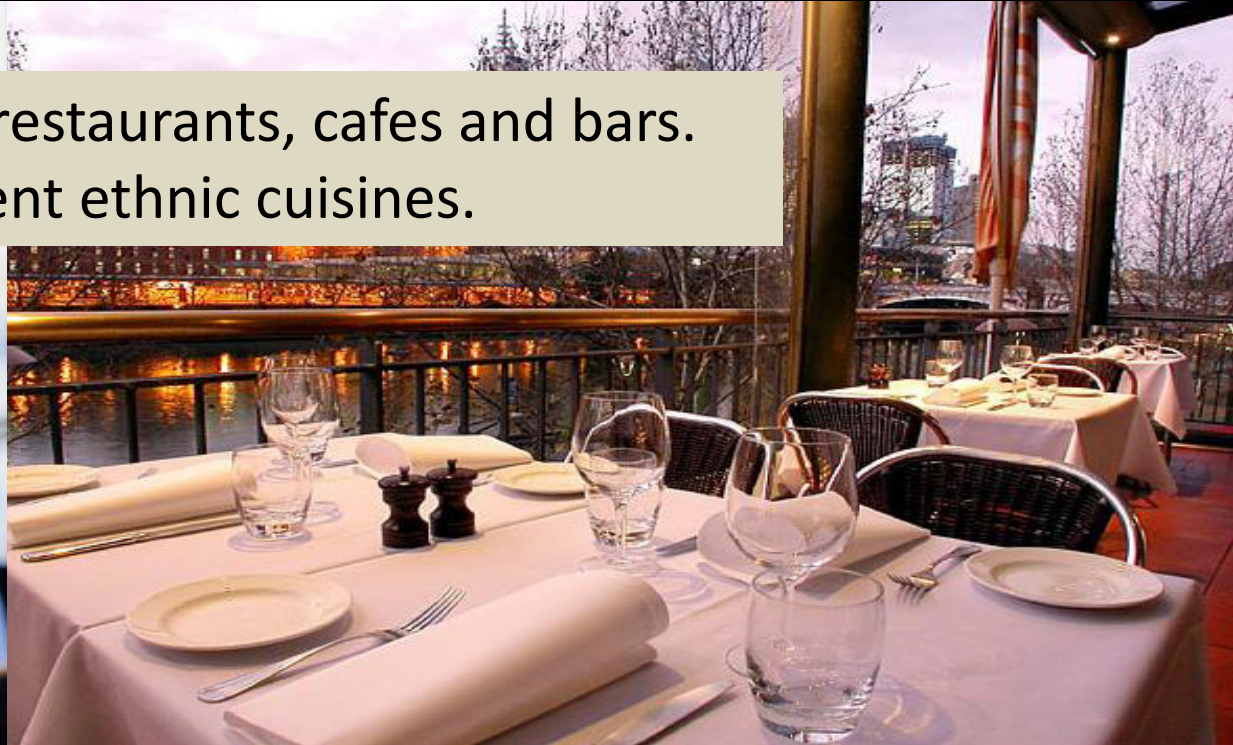
Climate in October - 20°C/68°F

Melbourne – Getting around



Great Restaurants & Bars

- More than 3,000 restaurants, cafes and bars.
- Around 75 different ethnic cuisines.



Conference Dinner Venues - Options

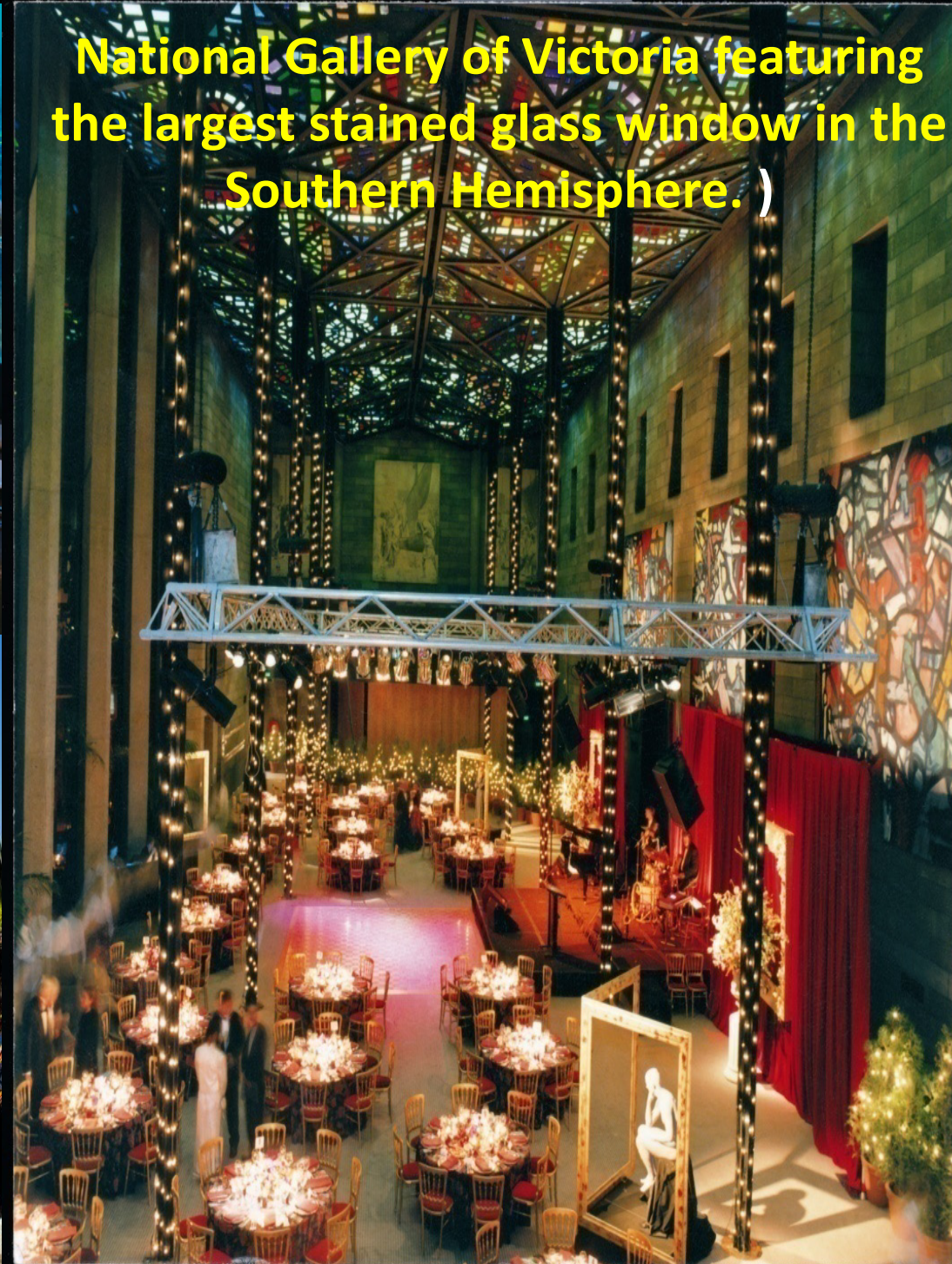
Melbourne Aquarium



Docklands on Victoria Harbour



National Gallery of Victoria featuring the largest stained glass window in the Southern Hemisphere.)



Or for more traditional Australian



Outstanding Leisure Pursuits

A scenic view of the Great Ocean Road, a coastal highway in Australia, with a car driving along the road and the ocean in the background.

Great ocean road

A woman and a young girl smiling next to a koala sitting on a wooden railing at the Healsville sanctuary.

Healsville sanctuary

Three penguins standing on a sandy beach at Phillip Island.

Phillip Island

A wide view of a lush green valley with rolling hills, a river, and a small town, representing the wine regions of Australia.

5 Wine regions and more than 100 wineries
within 90 minutes drive from city centre.

**We look forward to seeing you all in
Melbourne in 2015!**

