
ICALEPCS 2009 in Kobe, Japan

Ryotaro TANAKA
SPring-8/JASRI

ICALEPCS07 Knoxville, USA
October 19, 2007

E-mail: tanakar@spring8.or.jp

Ryotaro Tanaka, SPring-8

Welcome to Kobe

RIKEN/SPring-8 and JASRI/SPring-8
will host ICALEPCS'09 in Kobe.

Schedule is,
October 12 – 16, 2009

SPring-8, a light source facility

1-1.5GeV New Subaru Storage ring



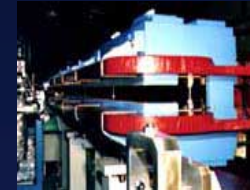
Booster



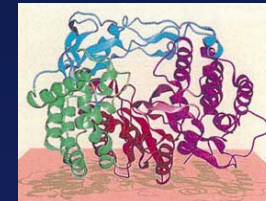
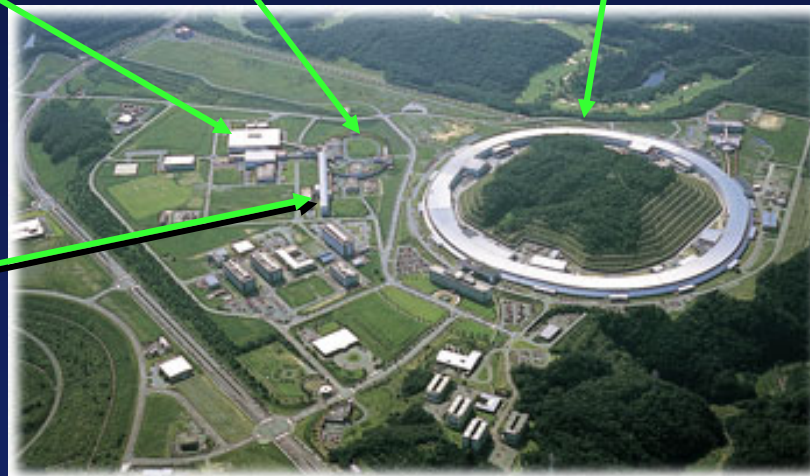
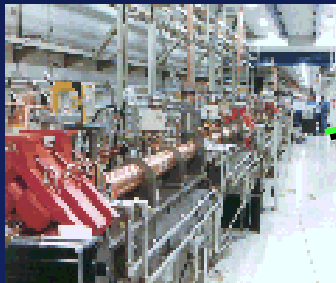
8GeV storage ring(1.5km)



SR light from bending magnets & undulators



1 GeV linac



50/62 BL are operational

In 2006,
600 experiments
2600 researchers from 23 country

SPring-8 is a 3rd generation light source (for the moment).

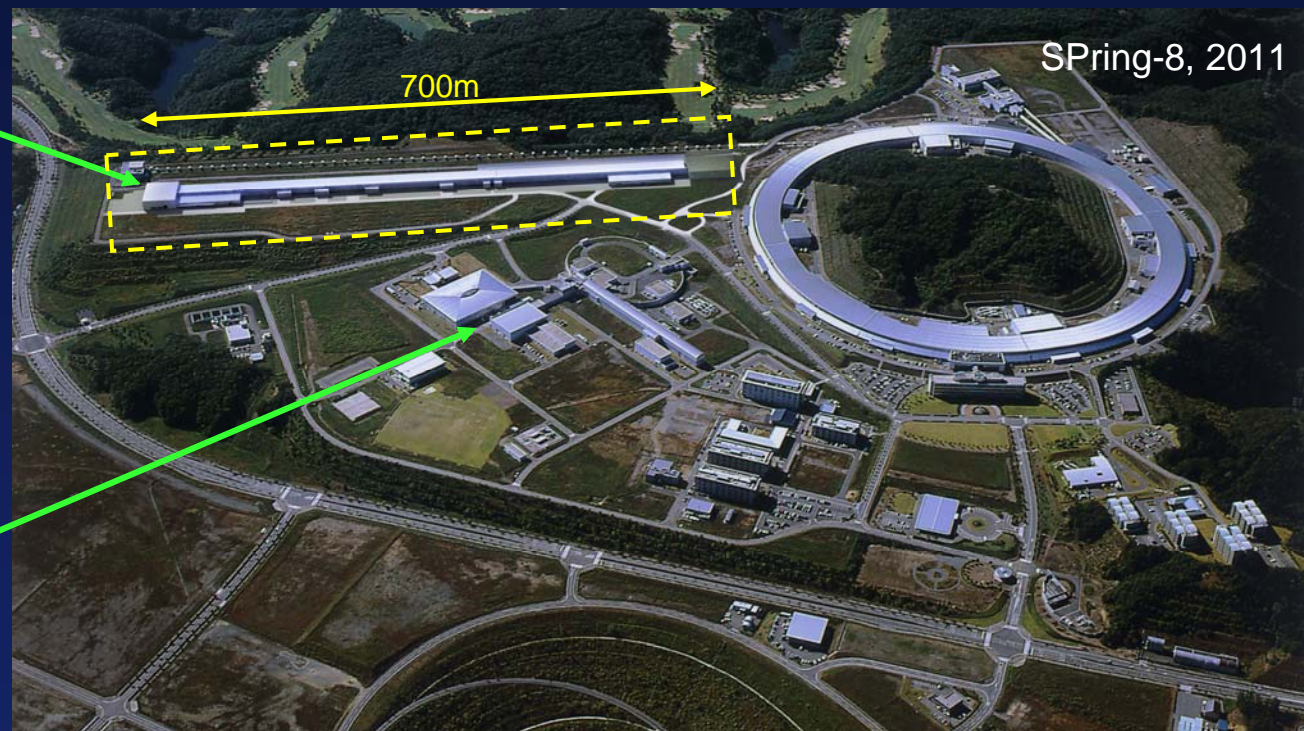
Towards 4th generation

SPring-8 is growing from 3rd generation to 4th generation with FEL

(FEL=Free Electron Laser)

National project
XFEL is under
construction
(8GeV linac,
Xray <0.1nm)

SCSS(EUV FEL)
is operating
(250MeV linac,
EUV~49nm)



SPring-8 SR facility and XFEL facility (under construction) with CG

(SASE= Self-Amplified Spontaneous Emission)

X & EUV EFL opens next generation

SCSS - 60m test accelerator

- ✧ Test machine to proof key components for 8GeV XFEL
- ✧ Two units of C-band(5721MHz) accelerating structure to get 250MeV electron beams
- ✧ Two in-vacuum undulators generate 49nm SASE EUV light
- ✧ Construction started in April 2004, now machine is running.



Utilization will start next week (10/22)

X-ray FEL is under construction

XFEL – One of four “key technologies of national importance”

- ✧ 400m C-band linac to get 8GeV electron beams
- ✧ 230m in-vacuum undulators to generate X-ray(<0.1nm) laser
- ✧ US\$320M project has started in April 2007.
- ✧ Machine commissioning is scheduled in February 2011.



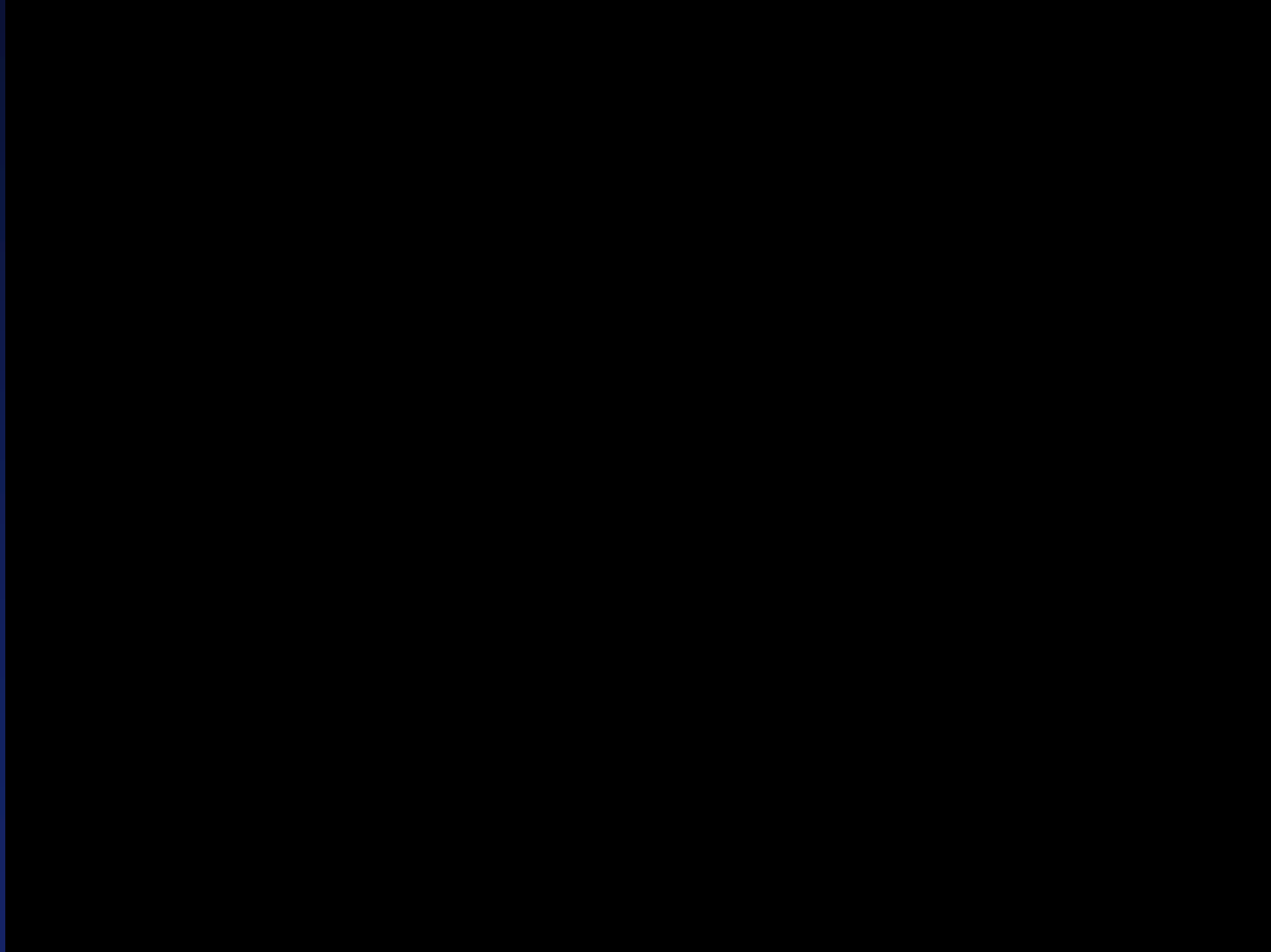
C-band accelerator consists of 128 accelerating structures



one BL consists of 18 in-vacuum undulators of 4.5m in length

You can visit

SPring-8 XFEL in February 2011 (3D video)

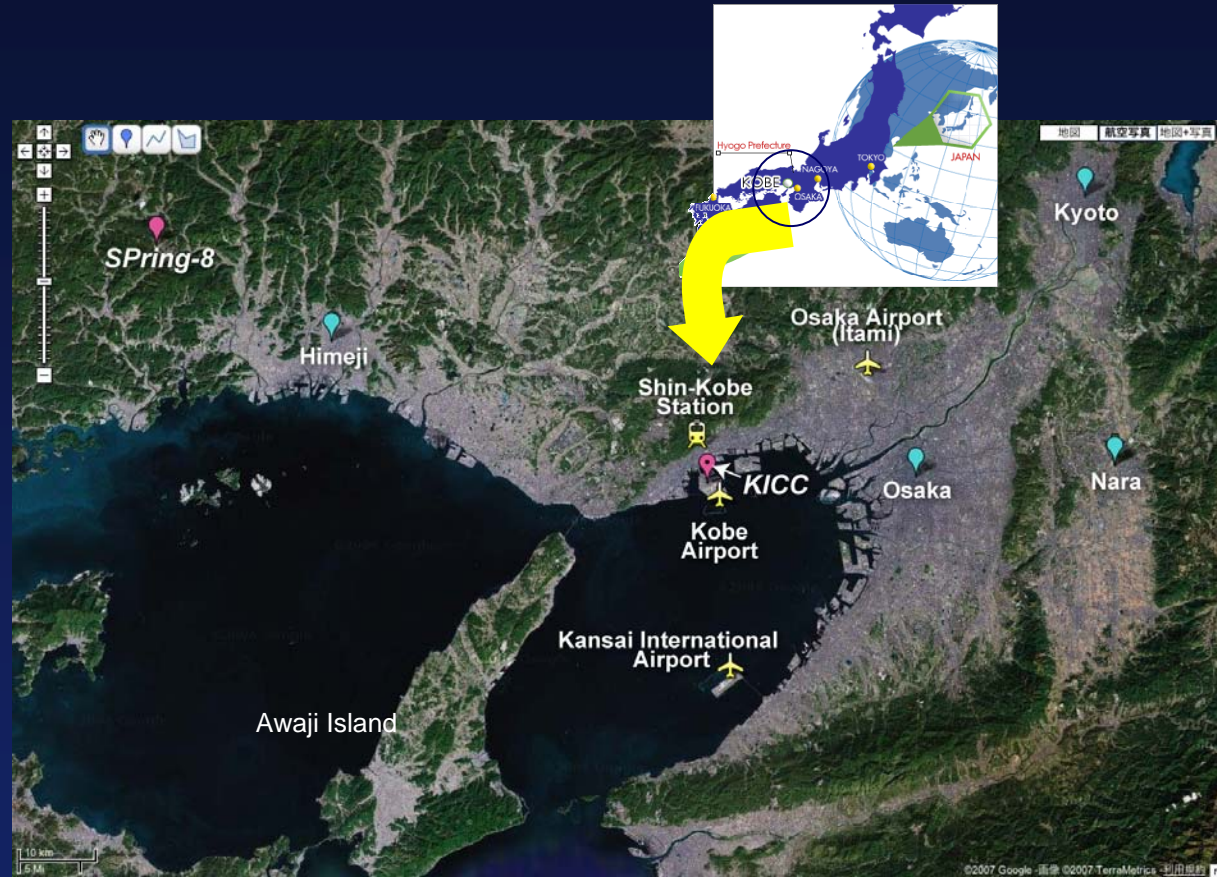


Where is Kobe ?

3 airports
Kansai international
Osaka(Itami)
Kobe

Shin-kobe st.
(Shinkansen)

Distance (by train)
20min to Osaka
40min to Himeji
50min to Kyoto
from Sannomiya st.



Map of Kansai area (from Google map)

Kobe - urban port city

Bridge to Port Island

Venue

Kobe airport



A view of Port Island and Kobe airport from Rokko Mt.

Population of Kobe is 1.53M(May 2007)



Venue - Kobe International Conference Center (KICC)



Main hall (692)



Secondary hall (360)

Stages for your presentation !

Accommodations

Portpia Hotel provides,
ICALEPCS'09 discount room rates
free shuttle service to Sannomiya



Many hotels more
(economy, luxury...
>7000 rooms)

Port Liner st.

KICC

Portpia Hotel
(interior renewed)



A view of Port Island (artificial island)

Social activities - Banquet

Banquet - three options

- Flower & bird park (Kacho-en)
 - Hotel dinner (Portopia H.)
 - Dinner cruise (Concerto)
- + Japanese music

We'll decide later ...



Traditional banquet in Portopia hotel dining room



You can feed birds (touch penguins) and enjoy flowers before banquet



Dinner cruise with \$1M value
Kobe night view

Social activities - Tours

(1) Technical tour to SPring-8

Depart on Friday afternoon by bus, simple lunch will be served
Tour will cover SPring-8 accelerator complex, SCSS, XFEL.
Tour is organized as the conference event.



(2) A full-day excursion to Kyoto

Depart on Saturday morning by bus, lunch will be served
Tour will cover Kinkaku temple, Old palace (special approval), Kiyomizu temple etc.
Tour will be free for participants and accompanied persons.



Social activities - accompanied persons

(1) Japanese culture

Tea ceremony, flower arrangement, cooking, music are planned. Free events.

English speaking local volunteer group will support.



(2) Sightseeing etc

Kobe city half-day tour and some sightseeing tours (Osaka , Nara may be) will be planned.

Kobe is famous in Sake, Kobe beef, shopping etc.



(3) Tour desk

Tour desk will open at KICC for individual travel assistance.



Please accompany your spouse, children ...

Welcome to Kobe, Japan



ICALEPCS'2009

INTERNATIONAL CONFERENCE ON ACCELERATOR AND
LARGE EXPERIMENTAL PHYSICS CONTROL SYSTEMS

October 12 - 16, 2009
Kobe International Conference Center
Japan

Joint hosted by RIKEN and JASRI

SPring-8

Ryotaro Tanaka, SPring-8