

TRANSVERSE BEAM PROFILE MEASUREMENTS FOR HIGH POWER PROTON BEAM

*P. Ausset, S. Bousson, D. Gardès, A.C. Mueller, B. Pottin,
I.P.N., 91406, Orsay, France,*

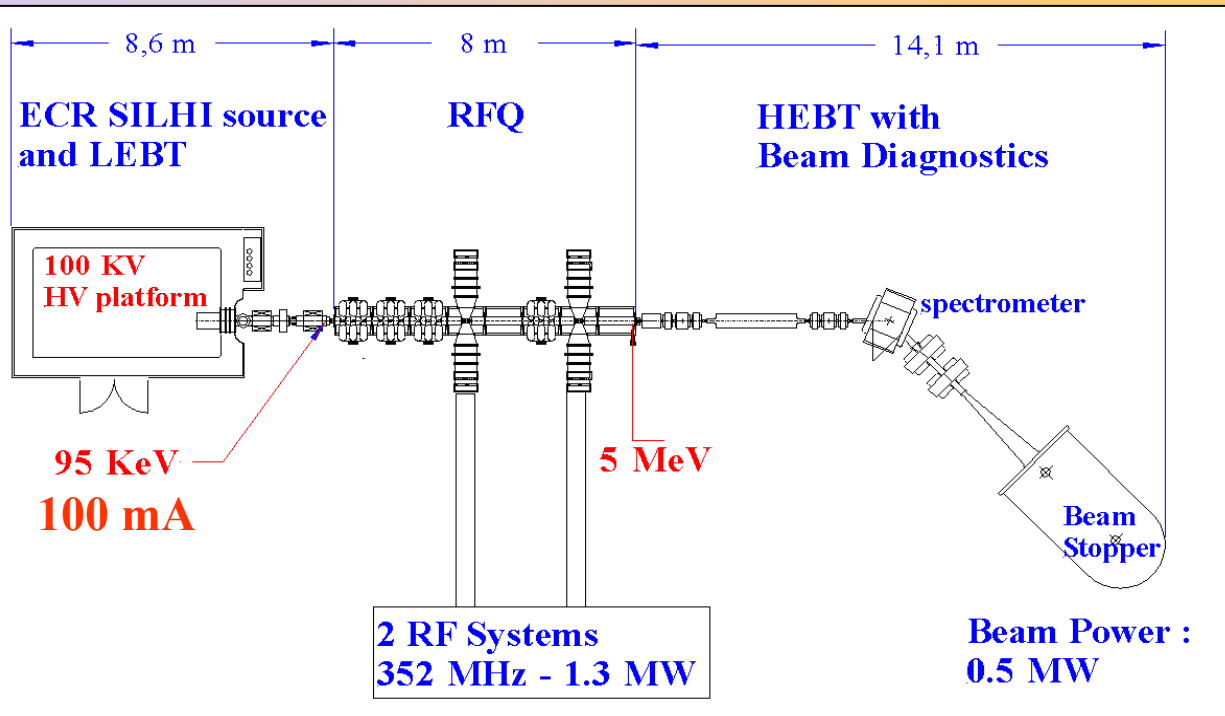
*R. Gobin,
CEA Saclay, 91191, Gif sur Yvette, France,*

*G. Belyaev, I. Roudskoy,
ITEP, Moscow, Russia*

TRANSVERSE BEAM PROFILE MEASUREMENTS FOR HIGH POWER PROTON BEAM

2

I.P.H.I. : « Injecteur de Protons Haute Intensité »



Parameters to be measured

- Intensity
- Beam position
- Energy
- Transverse Profiles

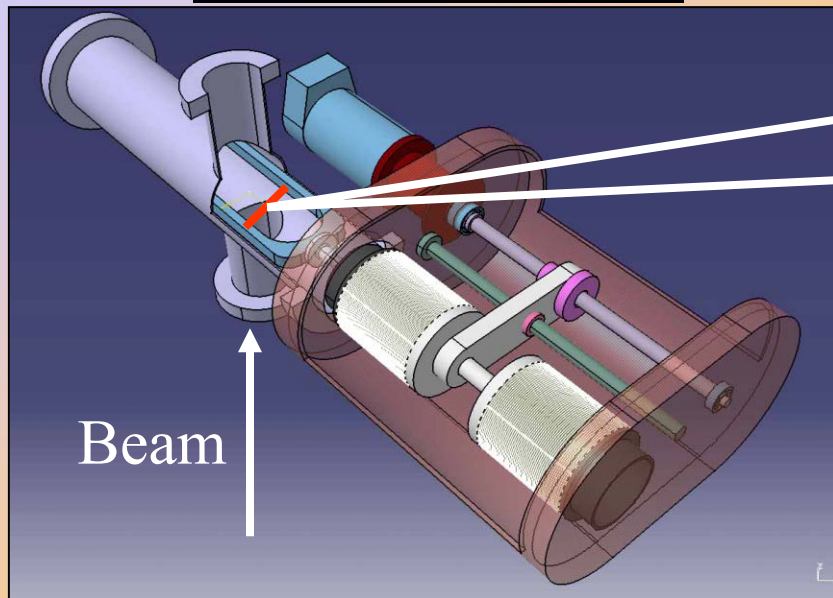
Mode Operation

- Pulsed Mode Operation (Beam Power 10kW)
- C.W. Mode Operation (Beam Power 0.5 MW)

TRANSVERSE BEAM PROFILE MEASUREMENTS FOR HIGH POWER PROTON BEAM

3

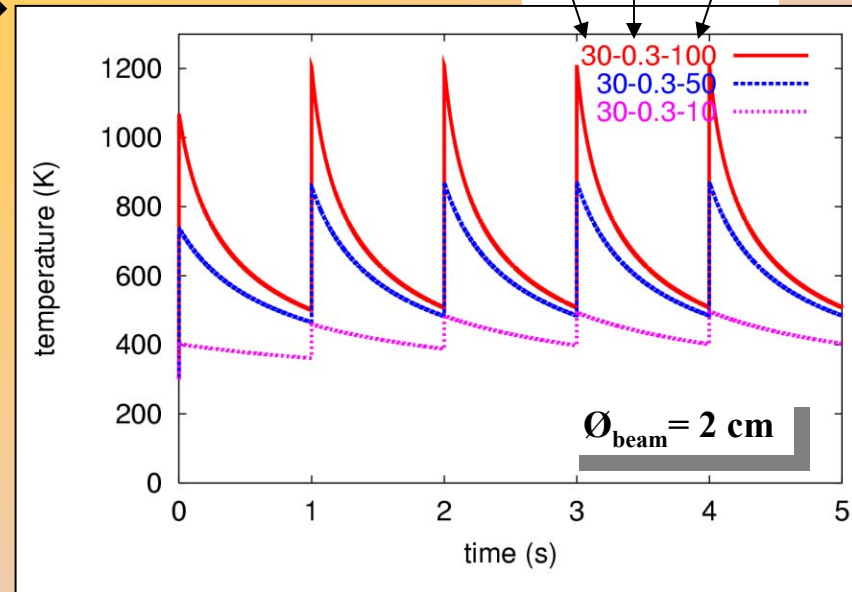
Wire scanner



Titanium
Tungsten
Tantalum
Carbon

Heating

$\varnothing ; \tau_b ; I_b$
 $\mu\text{m} ; \text{ms} ; \text{mA}$



$T > 1200 \text{ }^\circ\text{K}$

Thermo-ionic Emission

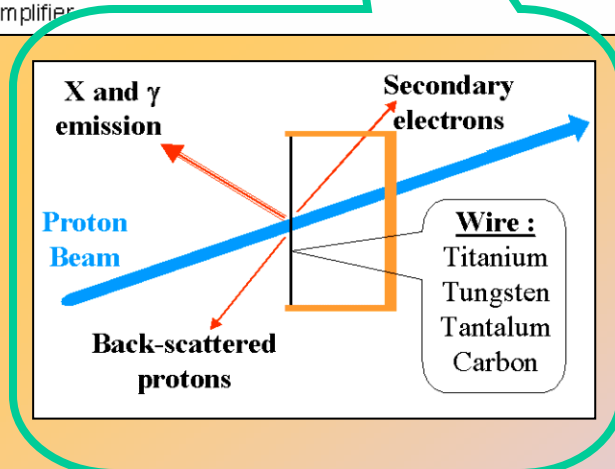
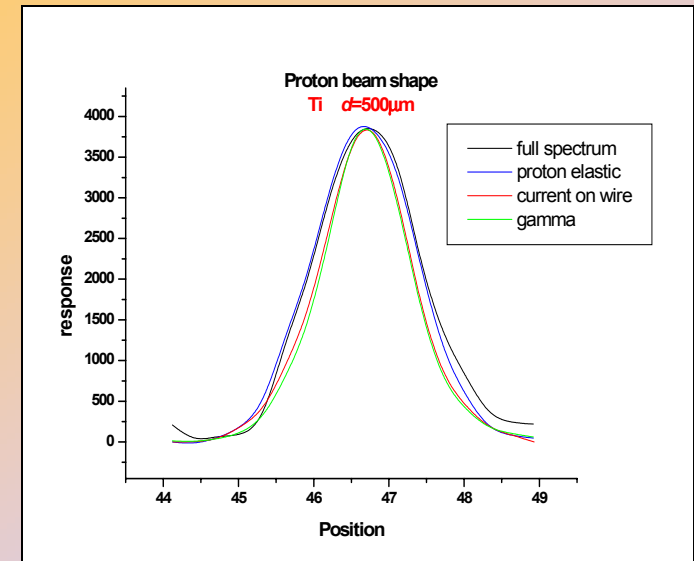
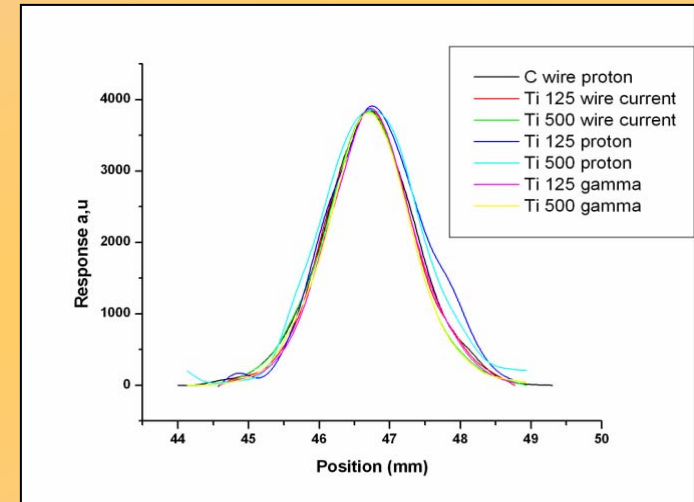
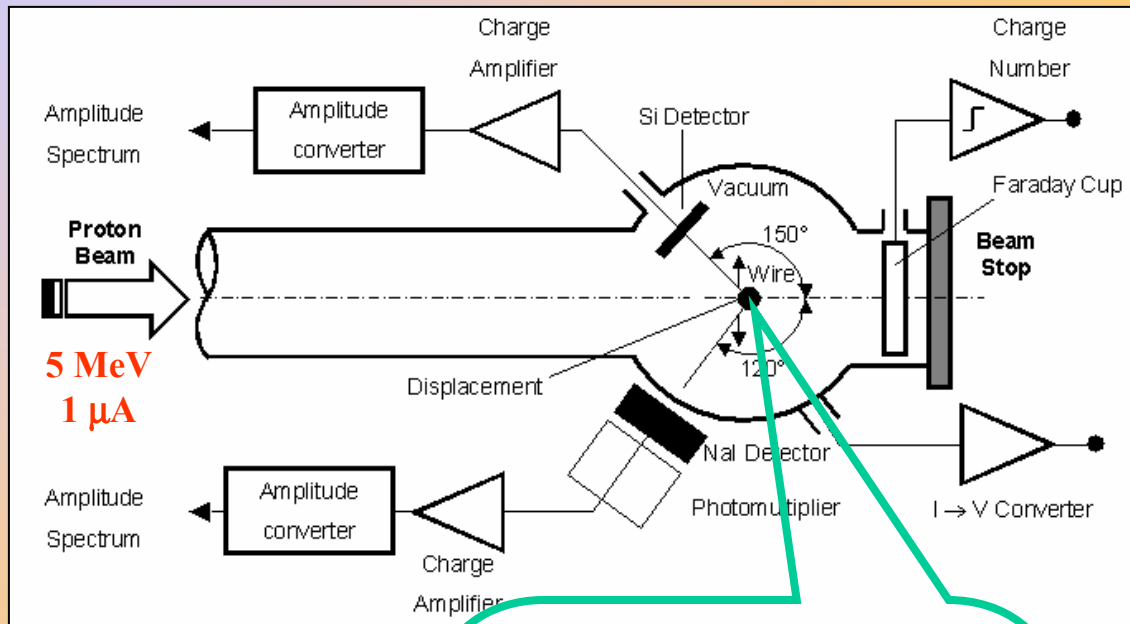
Mechanical Deformations

Distorted Measurements

TRANSVERSE BEAM PROFILE MEASUREMENTS FOR HIGH POWER PROTON BEAM

4

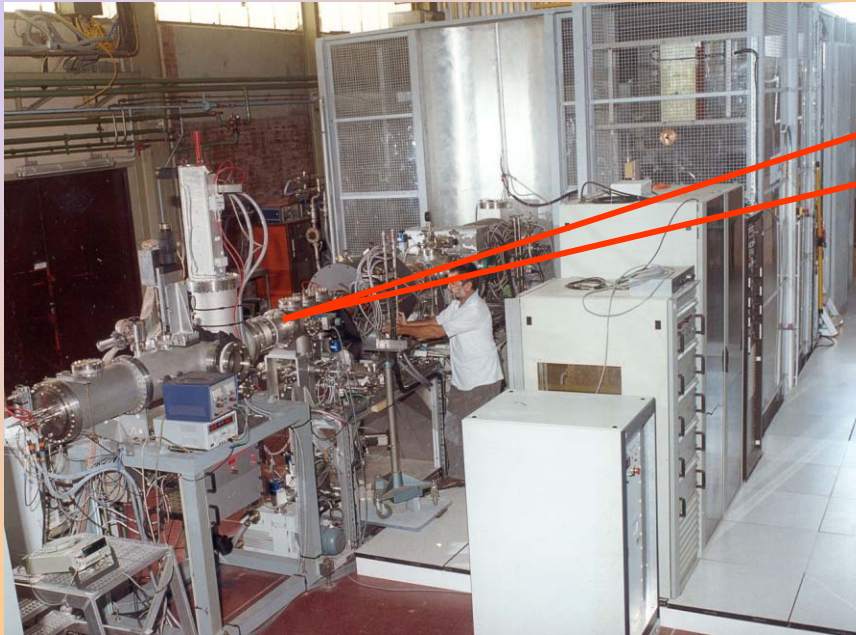
Tests I.P.N.O. : Tandem



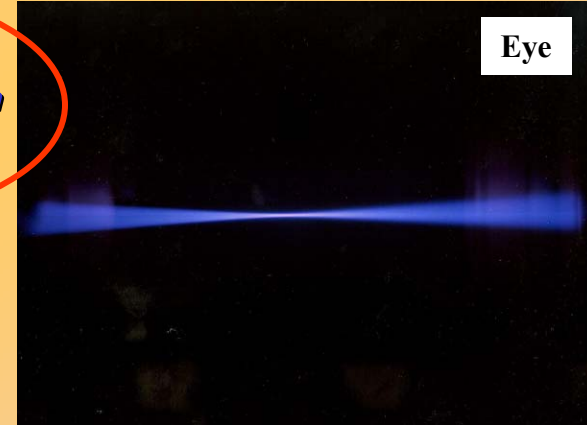
TRANSVERSE BEAM PROFILE MEASUREMENTS FOR HIGH POWER PROTON BEAM

5

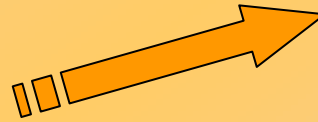
Optical based measurements : Fluorescence



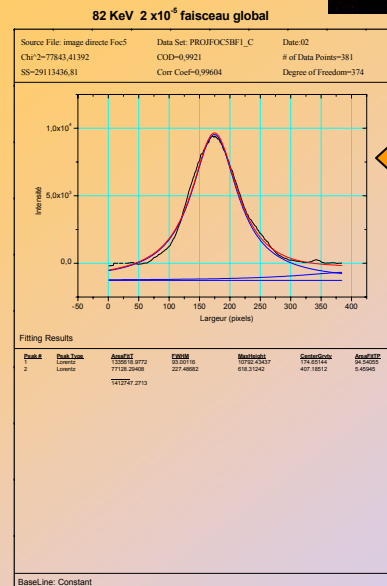
"Diagnostic box"



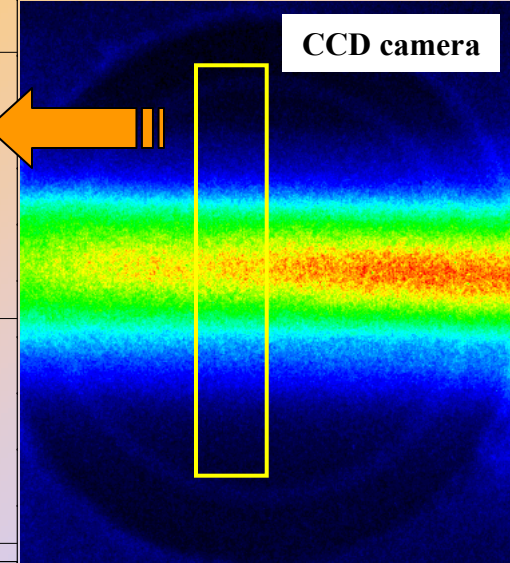
Eye



Proton Beam-Residual Gas
Interaction
(Hydrogen: $2 \cdot 10^{-3}$ Pa)



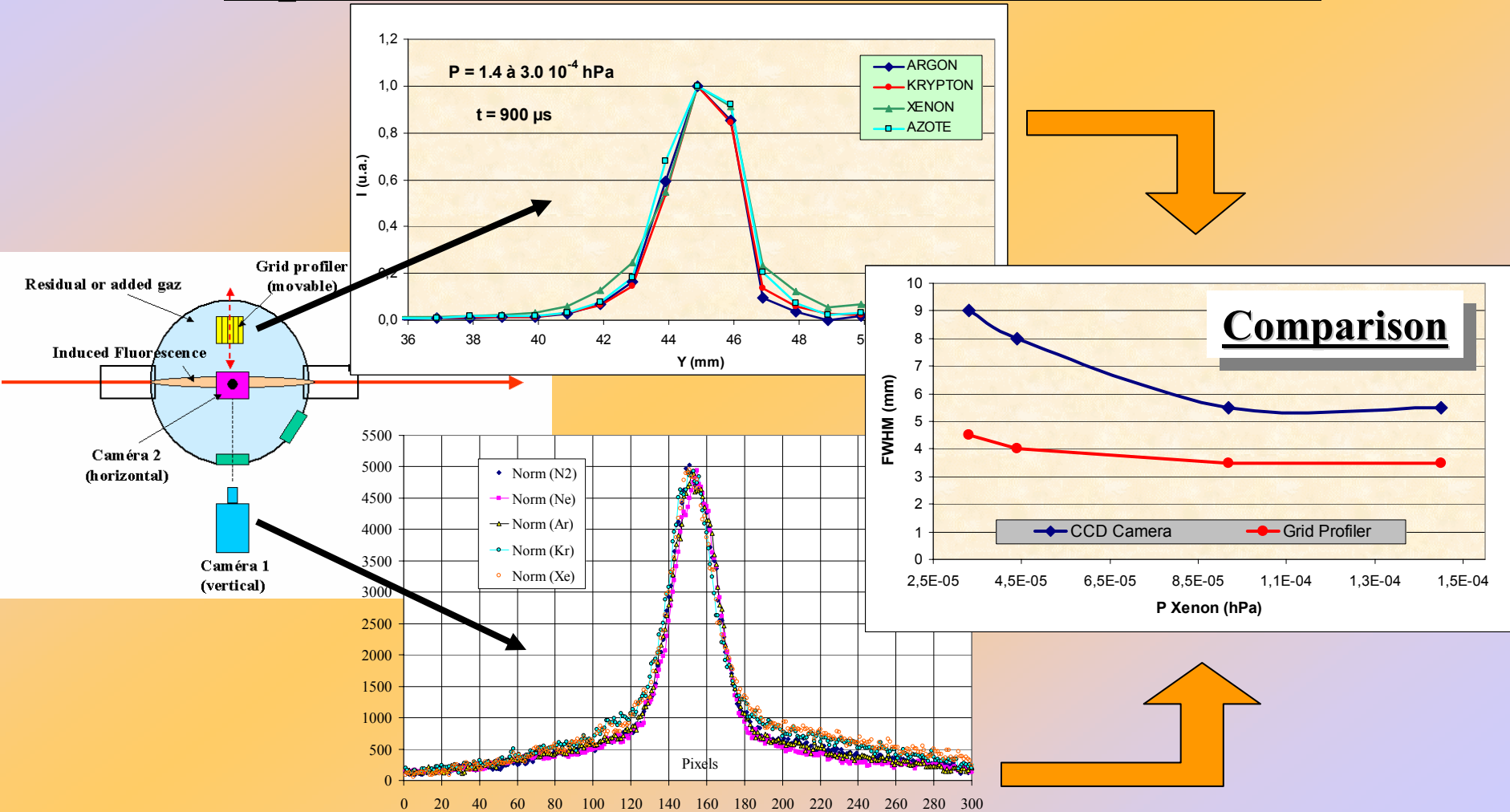
CCD camera



TRANSVERSE BEAM PROFILE MEASUREMENTS FOR HIGH POWER PROTON BEAM

6

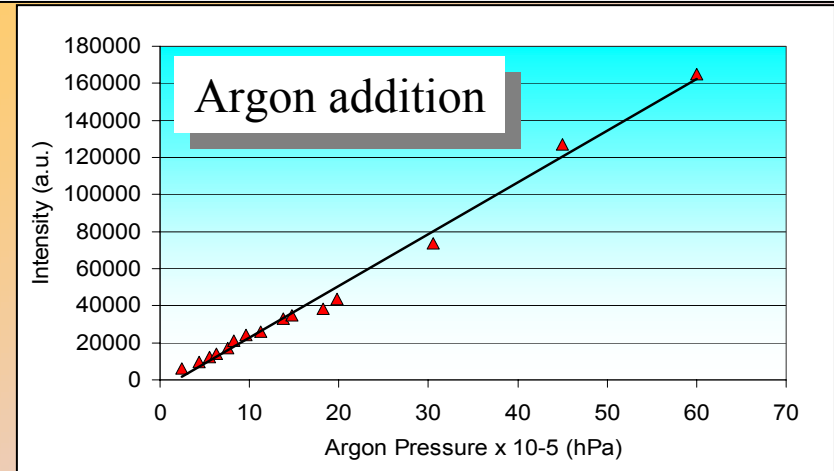
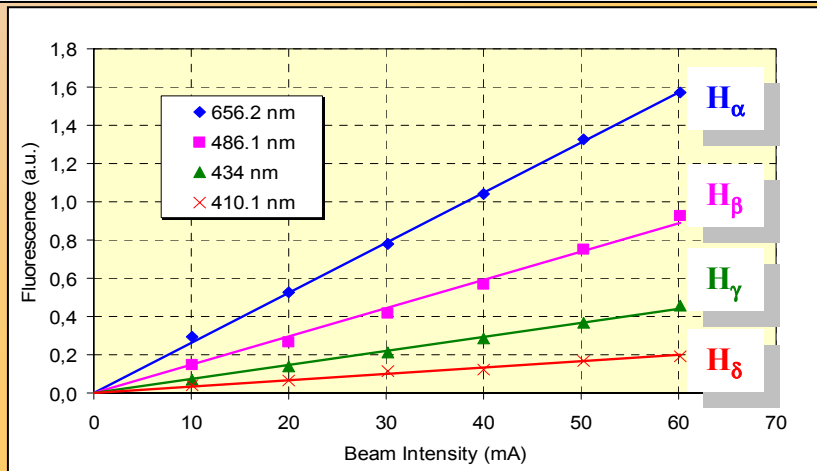
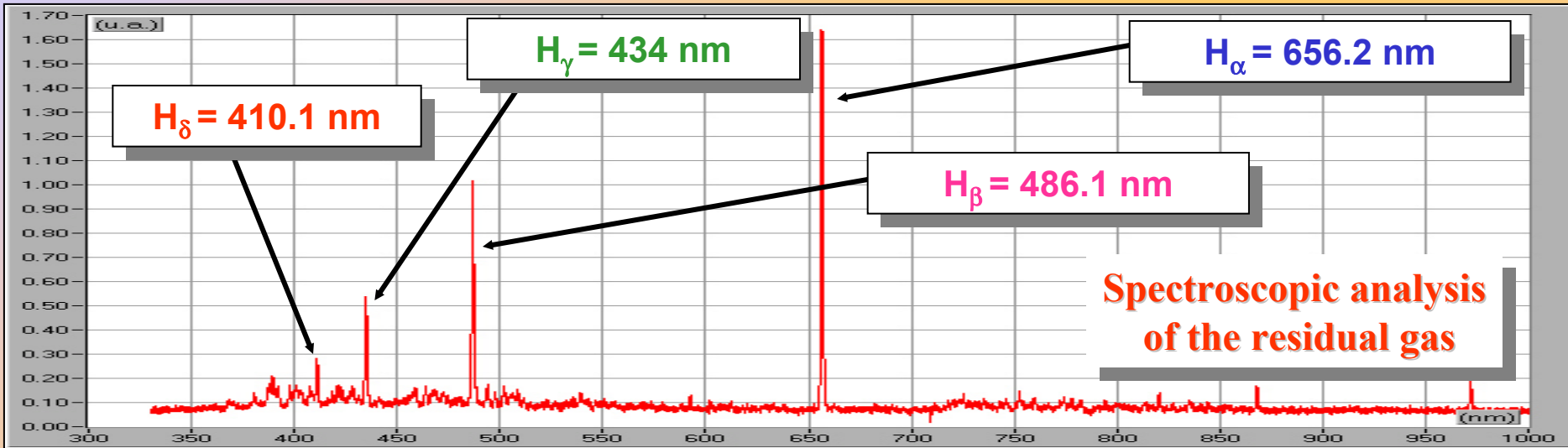
Optical Based Profiles Measurements



TRANSVERSE BEAM PROFILE MEASUREMENTS FOR HIGH POWER PROTON BEAM

7

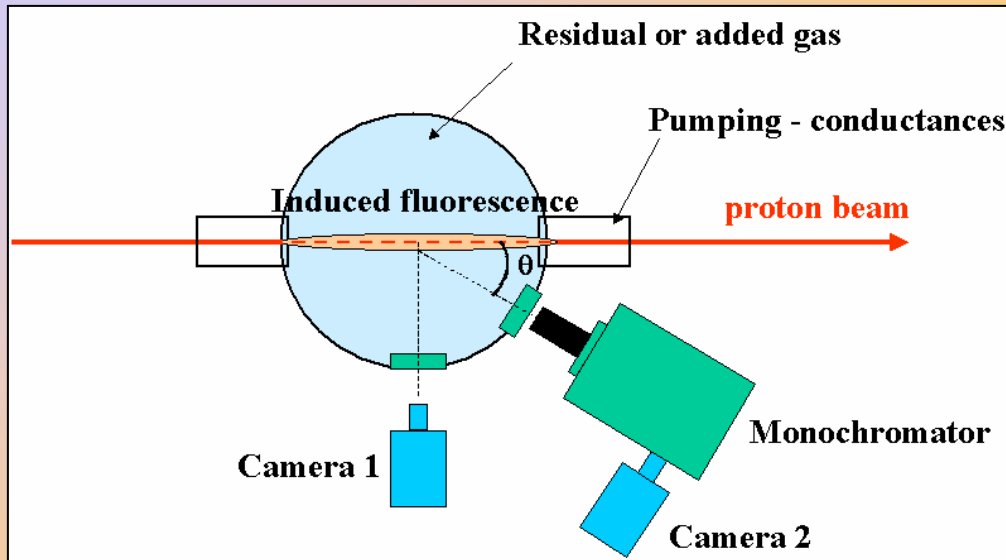
Optical based measurements : Luminescence analysis



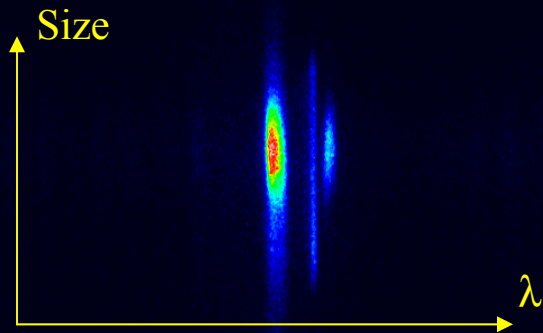
TRANSVERSE BEAM PROFILE MEASUREMENTS FOR HIGH POWER PROTON BEAM

8

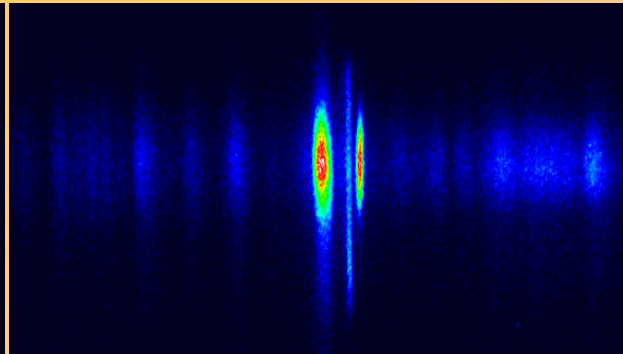
Optical based measurements : Shifted Doppler lines



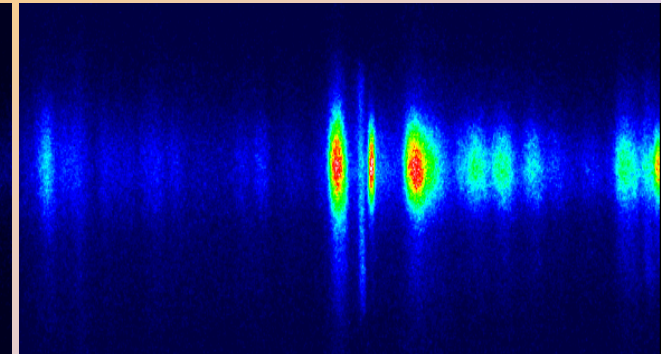
$$\Delta\lambda \approx \lambda_0 \cdot \frac{v}{c} \cdot \cos\theta$$



H_{α} : 656.2 nm



H_{β} : 486.1 nm



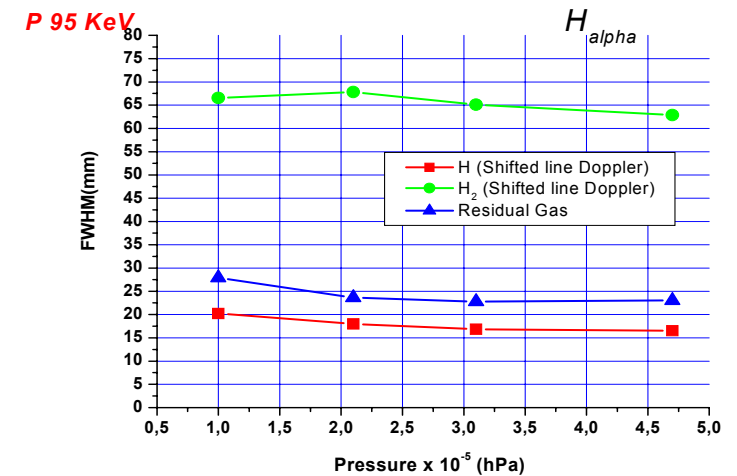
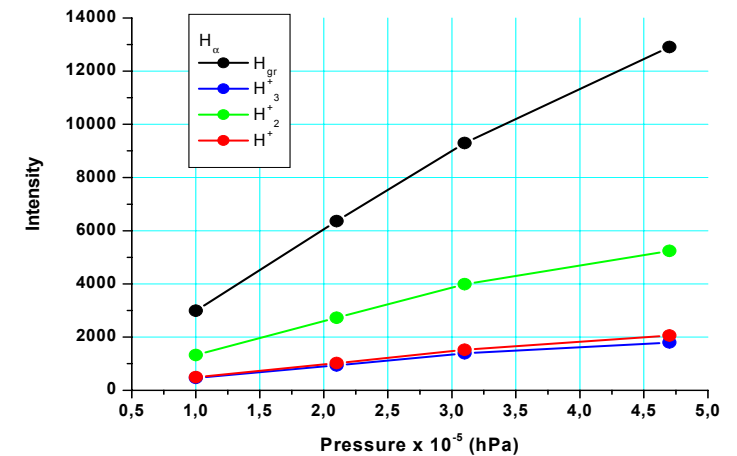
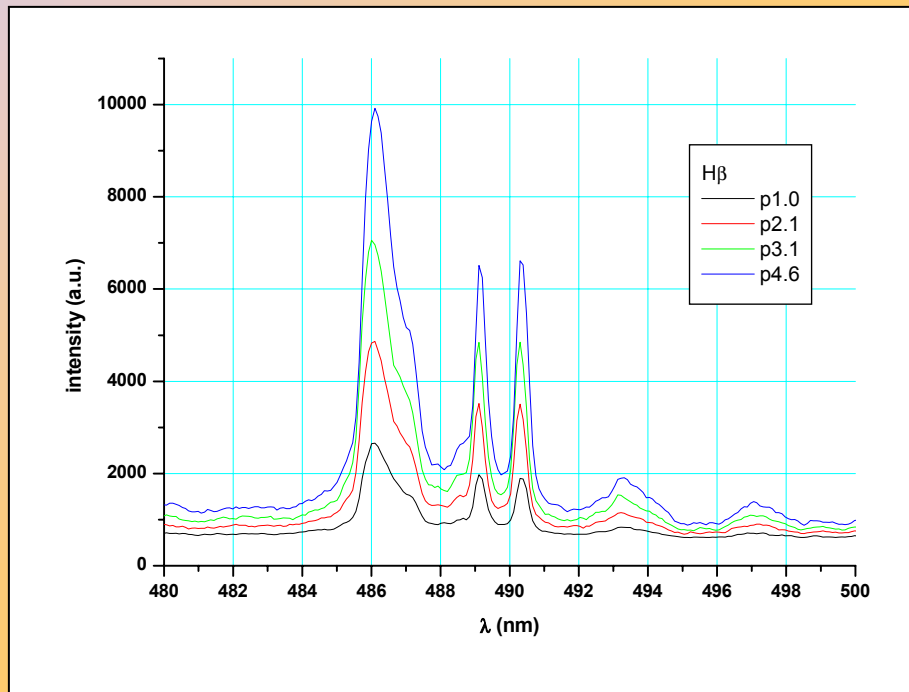
H_{γ} : 434 nm

TRANSVERSE BEAM PROFILE MEASUREMENTS FOR HIGH POWER PROTON BEAM

9

Optical based measurements : Shifted Doppler lines

Evolution with the gas pressure



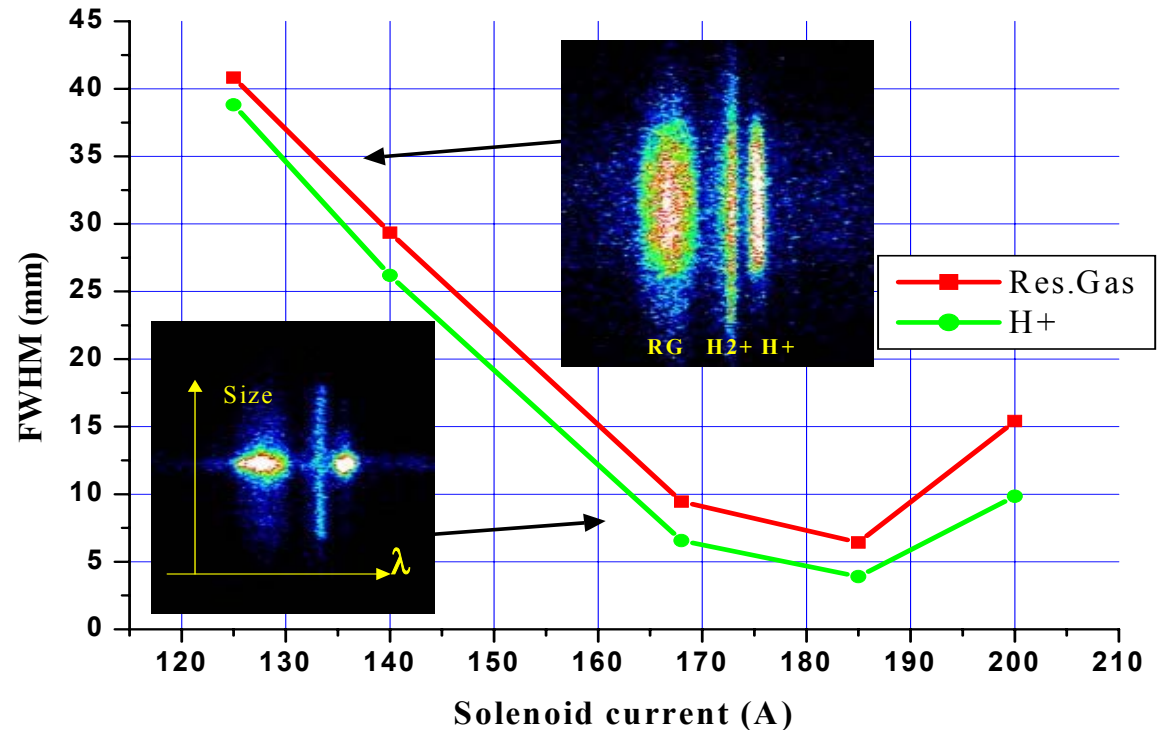
TRANSVERSE BEAM PROFILE MEASUREMENTS FOR HIGH POWER PROTON BEAM

10

Shifted Doppler fluorescence beam profile measurement

First result on the SILHI beam

Size of the "halo"
around the "core"
of the beam
remains constant



TRANSVERSE BEAM PROFILE MEASUREMENTS FOR HIGH POWER PROTON BEAM

11

Conclusion

- Wire scanner (*low power beam*) :
 - γ rays and back scattered protons cross check the classical measurements.
- Fluorescence measurements (*high power beam*) :
 - Beam centroid position measurements.
 - Qualitative beam profile measurements.
- Fluorescence shifted Doppler line (*high power beam*) :
 - Species identification.
 - Beam energy and energy spread.
 - Beam profile measurements are in progress.

TRANSVERSE BEAM PROFILE MEASUREMENTS FOR HIGH POWER PROTON BEAM

12

Acknowledgements

This work could not have been done without the collaboration of :

- **ACCELERATOR DIVISION (Technical support and theory)**
- **SILHI team**
- **TANDEM team**