

ENTRY NO. CU24 Date
 Cyclotron Model CYPRIIS 325
 Institution CERMEP
 Address 59, Bd. Pinel, 69003 LYON (France)
 Tel 33/72.33.00.07 Telex
 Fax 33/78.53.31.12 EMAIL
 In Charge: D. LE BARS Reported by: D. LE BARS

HISTORY

MILESTONE DATES:
 Installation Sept-Dec 1987 First Beam Jan 1988
 DESIGN/CONSTRUCTION BY: CGR Mev
 COST: Accelerator 15 MF Facility 60 MF
 FUNDED BY: INSERM/CNRS/HOSPITAL/UNIVERSITIES

STATUS

STAFF: Operators 1 Technicians
 BUDGET: Machine 500.000 F. Funded by CERMEP
 TIME DISTRIBUTION: (e.g. basic research, isotope production, maintenance, etc.)
 (a) Isotope production 95 %
 (b) Maintenance 5 %
 (c) 0 %
 (d) 0 %
 (e) 0 %

CHARACTERISTIC BEAMS

Accelerated Ions	E/A (MeV/u)	Current(part μ A)	
		Internal	External
(a) H^+	16 MeV		50 μ A
(b) D^+	8 MeV		50 μ A

1991 μ A-hours on target: \approx 2.000

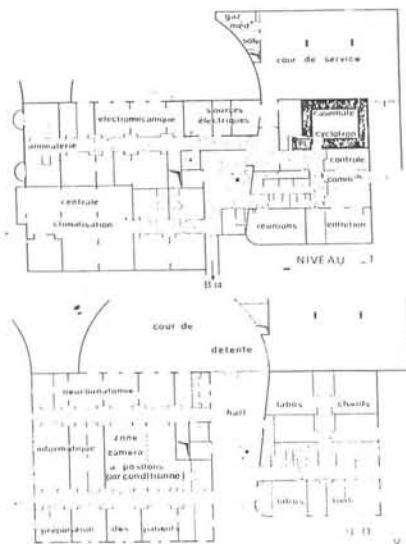
FACILITIES

SHIELDED AREA: Fixed 30 m² Moveable
 Target Stations: No. Served At Same Time:
 OTHER FACILITIES: 4 hot cells
 Automated chemistry (Developped on-site)

REFERENCES/NOTES

- (a)
- (b)

PLAN VIEW OF FACILITY, COMMENTS



ENTRY NO. CU25 Date
 Cyclotron Model CV 28
 Institution Physikalisch-Technische Bundesanstalt
 Address Bundesallee 100, W-3300 Braunschweig, FRG
 Tel 0531-592.7121 Telex 952822.ptb.d
 Fax 0531-592.4006 EMAIL
 In Charge: R. Böttger Reported by: R. Böttger

HISTORY

MILESTONE DATES:
 Installation 1972-1973 First Beam 1973
 DESIGN/CONSTRUCTION BY: The Cyclotron Corporation
 COST: Accelerator $3 \cdot 10^6$ DM Facility $25 \cdot 10^6$ DM
 FUNDED BY: Federal Republic of Germany

STATUS

STAFF: Operators 4 Technicians 2
 BUDGET: Machine $2 \cdot 10^8$ DM Funded by FRG
 TIME DISTRIBUTION: (e.g. basic research, isotope production, maintenance, etc.)
 (a) Nuclear data (neutron physics) 30 %
 (b) Calibration (n γ) 30 %
 (c) Dosimetry 40 %
 (d) 0 %
 (e) 0 %

CHARACTERISTIC BEAMS

Accelerated Ions	E/A (MeV/u)	Current(part μ A)	
		Internal	External
(a) p max.	24	> 350	70-100
(b) d max.	7	> 300	100

1991 μ A-hours on target: 2000

FACILITIES

SHIELDED AREA: Fixed 850 m² Moveable
 Target Stations: 5 No. Served At Same Time: 2
 OTHER FACILITIES: Time of flight facility for fast neutrons; standard neutron field for therapy and radiobiology

REFERENCES/NOTES

- (a) Nucl. Instrum. Meth., 169 (1980) 349 - 358
- (b) Nucl. Instrum. Meth., 193 (1982) 635 - 644

PLAN VIEW OF FACILITY, COMMENTS

Movable cyclotron arrangement with ns-pulsing system especially designed for neutron scattering experiments.

