



Abstract

The cryogenic installations at DESY are widely spread over the DESY campus. Many new components have been and will be installed for the new European XFEL. Commissioning and testing takes a lot of time. Local tag labels help identify the components but it is error prone to type in the names. Local bar-codes and/or Data Matrix codes can be used in conjunction with intelligent devices like smart (i)Phones to retrieve data directly from the control system. The developed application will also show information from the asset database. This will provide the asset properties of the individual hardware device including the remaining warranty. Last not least cables are equipped with a bar-code which helps to identify start and endpoint of the cable and the related physical signal. This paper will describe our experience with the mobile applications and the related background databases which are operational already for several years.



Scanning the device code



Calling the (OSGi-) services that provides the data.

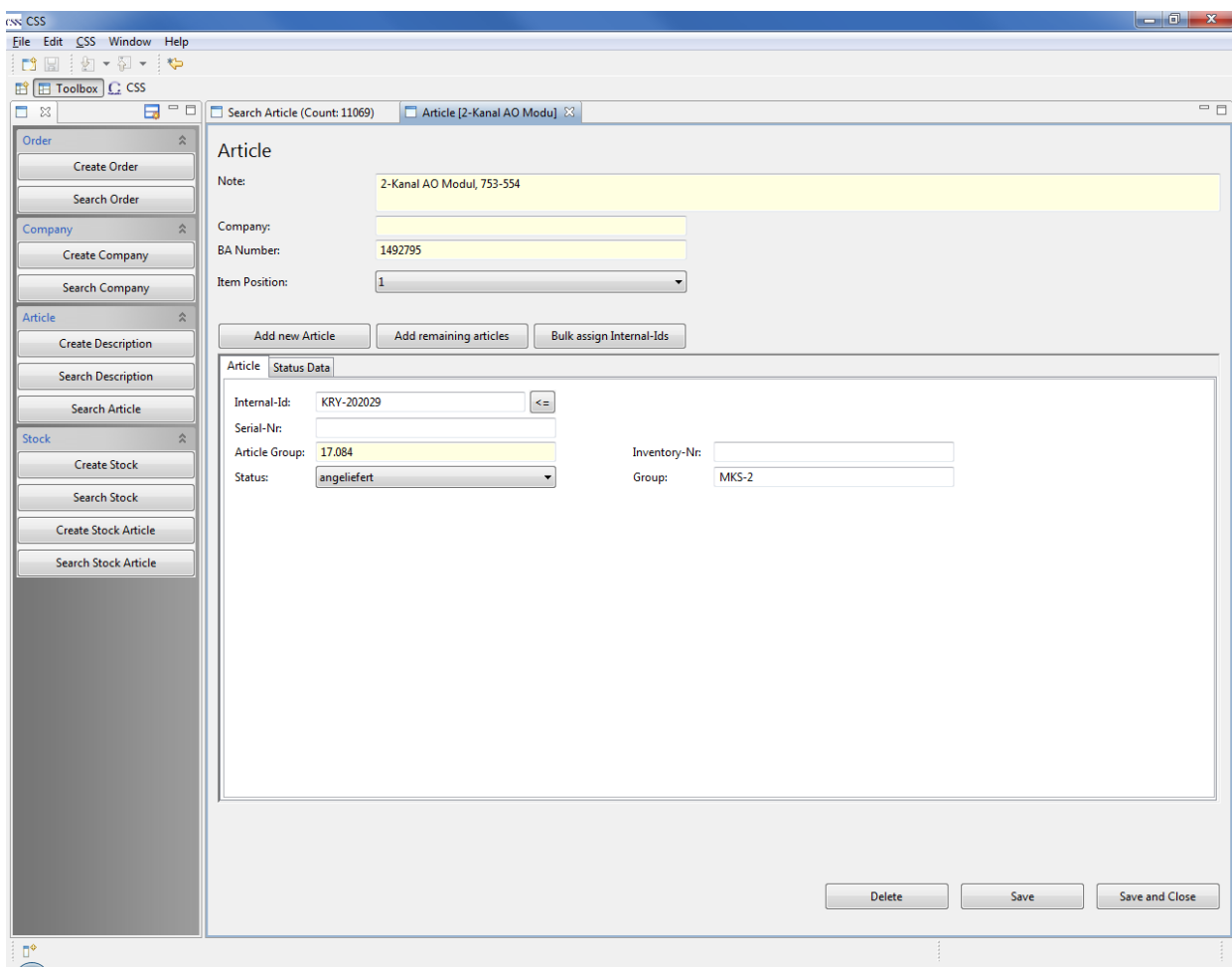
Calling the web application that provides the data (different services)

Service Dispatcher

OSGi-Service

The services return the data as CSS related content.

The web application returns the data as a XML file.



The data is shown in a typical Eclipse view.



The App parses the XML file and shows the data using generic „views“

