

ENTRY NO. CU29 Date August 29, 1995
 Cyclotron Model Scanditronix MC 35
 Institution Medizinische Hochschule Hannover
 Address D-30623 Hannover
 Tel 0511-532-3085 Telex
 Fax 0511-532-2315 E-MAIL
 In Charge: Dr. Helmke Reported by: Dr. Helmke

HISTORY
 MILESTONE DATES:
 Installation 1976/77 First Beam 21/01/1977
 DESIGN/CONSTRUCTION BY:
 COST: Accelerator Facility
 FUNDED BY:

STATUS
 STAFF: Operators 1 Technicians 1
 BUDGET: Machine Funded by
 TIME DISTRIBUTION: (e.g. basic research, isotope production, maintenance, etc.)
 (a) Isotope production 90 %
 (b) Maintenance 8 %
 (c) Tests (cyclotron, target, radiochemistry) 2 %
 (d) %
 (e) %

CHARACTERISTIC BEAMS

Accelerated Ions	E/A (MeV/u)	Current (part μ A)	
		Internal	External
(a) protons	35		65
(b) deuterons	18		65

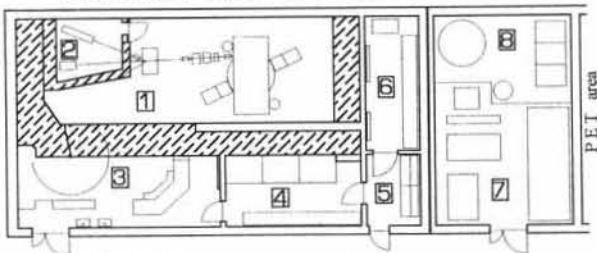
 1994 μ A-hours on target: 5908

FACILITIES
 SHIELDED AREA: Fixed: 100 m² Moveable m²
 Target Stations: No. Served At Same Time:
 OTHER FACILITIES:

REFERENCES/NOTES gas - 6 positions
 (a) target stations: solids - 3 positions
 (b) He-3 and He-4 beam

PLAN VIEW OF FACILITY, COMMENTS

CYCLOTRON AREA and RADIOCHEMISTRY



- 1 cyclotron vault
- 2 target stations
- 3 control room
- 4 hot cell laboratory
- 5 workshop
- 6 electronic cabinets
- 7 electronic cabinets and air conditioning
- 8 water cooling and liquid waste collection

ENTRY NO. CU30 Date
 Cyclotron Model BC 1710
 Institution Institut für Nuklearchemie, KFA Jülich
 Address KFA Jülich, D-52425 Jülich, Germany
 Tel +49.2461.61.4141 Telex 833556 KFA.D
 Fax +49.2461.61.2535
 In Charge: Dr. S.M. Qaim Reported by: Dr. S.M. Qaim
 E-MAIL: ICH107.ZAM001.ZAM KFA-JUELICH.de

HISTORY
 MILESTONE DATES:
 Installation January 1987 First Beam April 1987
 DESIGN/CONSTRUCTION BY: Japan Steel Works
 COST: Accelerator Facility
 FUNDED BY: KFA Jülich

STATUS
 STAFF: Operators 2 Technicians
 BUDGET: Machine Funded by KFA Jülich
 TIME DISTRIBUTION: (e.g. basic research, isotope production, maintenance, etc.)
 (a) Isotope production 100 %
 (b) %
 (c) %
 (d) %
 (e) %

CHARACTERISTIC BEAMS

Accelerated Ions	E/A (MeV/u)	Current (part μ A)	
		Internal	External
(a) p	17	/	40
(b) d	10	/	30

 1994 μ A-hours on target: 7820

FACILITIES
 SHIELDED AREA: Fixed: ca. 60 m² Moveable m²
 Target Stations: 1 No. Served At Same Time: 1
 OTHER FACILITIES:
 Hot cells, radiochemistry laboratories, automated
 radiopharmaceutical production units

REFERENCES/NOTES
 (a) Production of PET radiopharmaceuticals
 (b)

PLAN VIEW OF FACILITY, COMMENTS