



ICALEPCS 2015

International Conference on Accelerator
& Large Experimental Physics
Control Systems

Upgrade of the Beam Monitor System for Hadron Experimental Facility at J-PARC

Y.Morino, K.Agari, Y.Sato, A.Toyoda
KEK

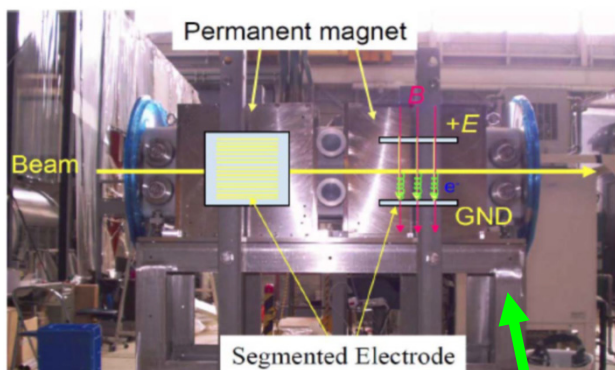
MOM309



ICALEP 2015

International Conference on Accelerator
& Large Experimental Physics
Control Systems

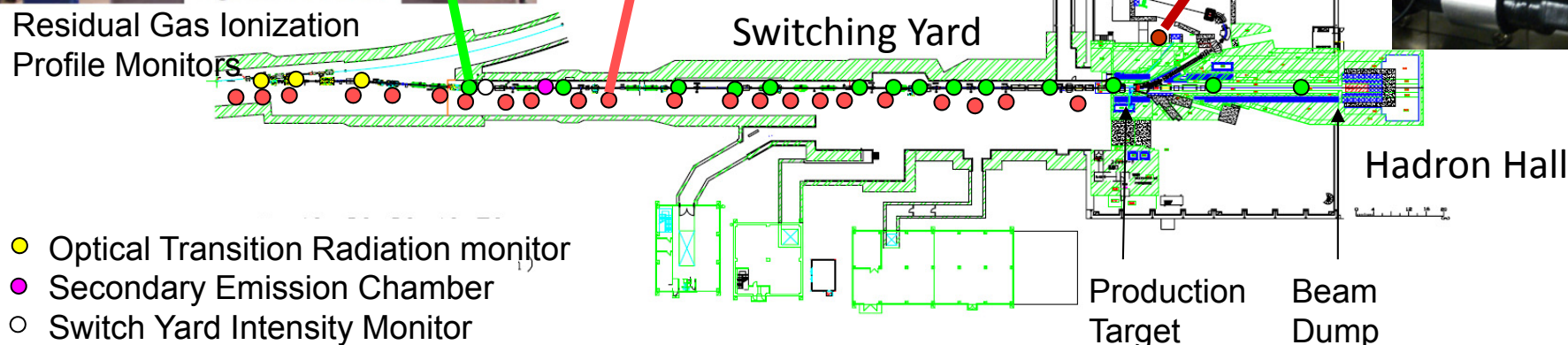
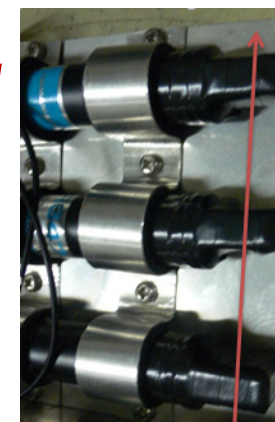
● Beam Profile Monitor



● Beam Loss Monitor



● Rate Monitor



- Optical Transition Radiation monitor
- Secondary Emission Chamber
- Switch Yard Intensity Monitor

- Detect abnormal beam extraction
→ Generate interlock signal & Stop the next beam extraction
- Protect the machines



ICALEPCS 2015

International Conference on Accelerator
& Large Experimental Physics
Control Systems

Beam Profile Monitor

Beam Loss Monitor

Rate Monitor

before::readout after beam spill



readout 8 times
during beam spill

→ Detection short
time narrow width

~10kHz readout
(5Hz online monitor)

→ Detection large
beam loss immediately

~1kHz readout

→ Detection a short
pulse beam

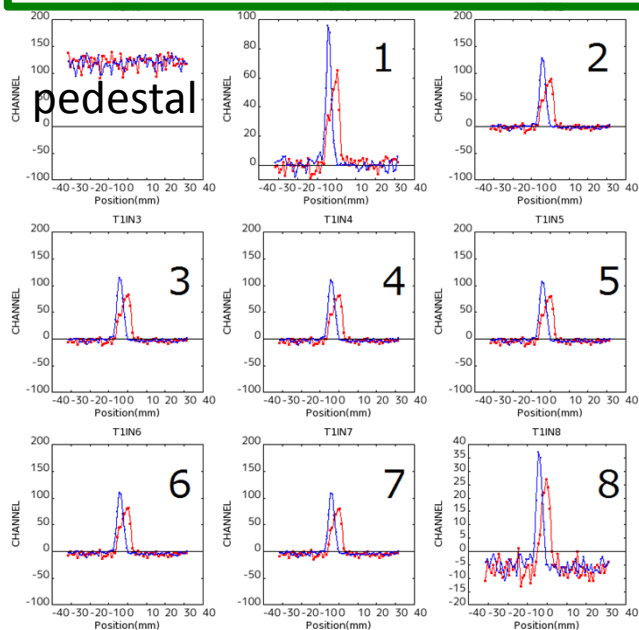
- Upgrade Readout & Interlock System of Monitors



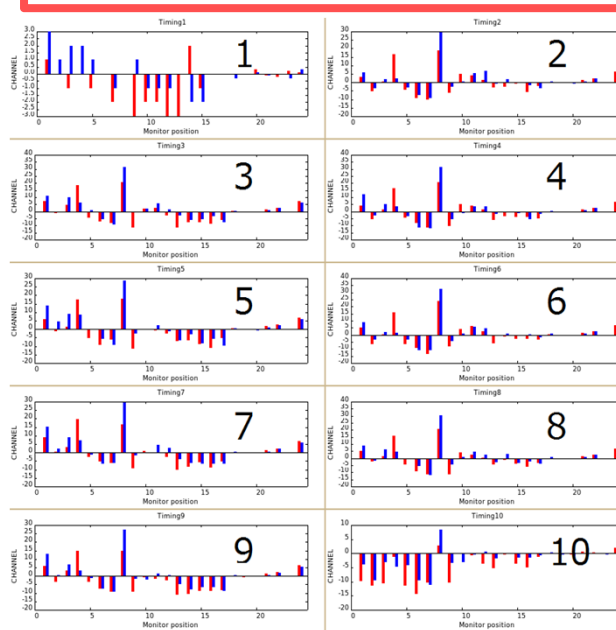
ICALEPCS 2015

International Conference on Accelerator
& Large Experimental Physics
Control Systems

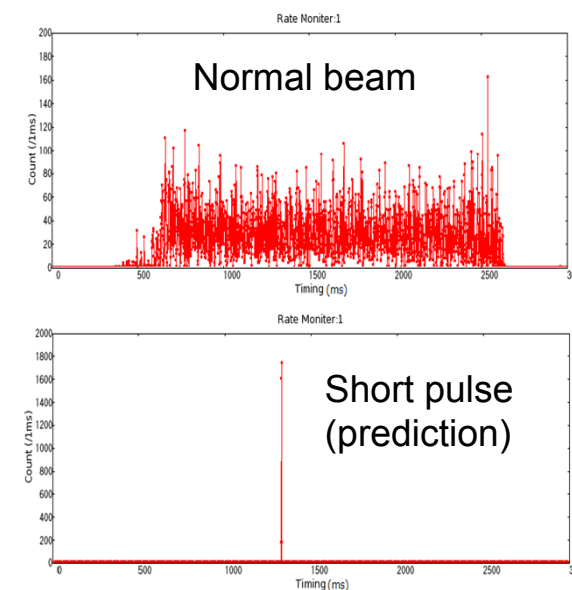
Beam Profile Monitor



Beam Loss Monitor



Rate Monitor



- The upgraded monitor system worked from Apr 2015.
- Abnormal beam extraction can be detected immediately.
→ A new interlock system can abort the abnormal beam even during extraction. (from Oct 2015)